



சுருக்கம்

அறிவிப்புகள் - ஊரக வளர்ச்சி மற்றும் ஊராட்சித் துறை- 2022-2023-ஆம் ஆண்டிற்கான வரவு செலவு சட்டத் தொடரில் மாண்புமிகு முதலமைச்சர் அவர்களால் சட்டமன்றப் பேரவையில் 110 விதியின் கீழ் வெளியிடப்பட்ட அறிவிப்பு - 600 ஊராட்சிகளில் 600 புதிய கிராமச் செயலகங்கள் கட்டுவதற்கு நிதி ஒப்பளிப்பு அளித்து - ஆணை வெளியிடப்படுகிறது.

ஊரக வளர்ச்சி மற்றும் ஊராட்சி (மாஅதி-3) துறை

அரசாணை (நிலை) எண்.140

நாள் 20.12.2022

சுபகிருது மார்கழி 5ந்தேதி
திருவள்ளூர் ஆண்டு 2053

படிக்கப்பட்டவை:

1. மாண்புமிகு முதலமைச்சர் அவர்கள் 22.04.2022 அன்று 2022-2023ஆம் ஆண்டிற்கான வரவு செலவு சட்டத் தொடரில் 110 விதியின் கீழ் வெளியிடப்பட்ட அறிவிப்பு எண்.6.
2. ஊரக வளர்ச்சி மற்றும் ஊராட்சி ஆணையரின் கடித ந.க.எண். 27034/2022/ப.ரா.1.1 நாள் 01.08.2022.
3. அரசு கடித எண்.12136/மா.அ.தி.3/2022-3, நாள் 09.09.2022.
4. ஊரக வளர்ச்சி மற்றும் ஊராட்சி ஆணையரின் கடித ந.க.எண். 27034/ 2022/ ப.ரா.1.1, நாள் 21.09.2022.
5. அரசாணை(நிலை) எண். 113, ஊ.வ.(ம) ஊ.(மா.அ.தி.3) துறை, நாள் 11.10.2022.

ஆணை :

2022-2023-ஆம் ஆண்டிற்கான வரவு-செலவு சட்டத் தொடரின்போது மாண்புமிகு முதலமைச்சர் அவர்கள் சட்டமன்றப் பேரவையில் 22.04.2022 அன்று 110 விதியின் கீழ் கீழ்க்காணும் அறிவிப்பினை வெளியிட்டுள்ளார்:-

"அரசின் பல்வேறு திட்டங்களை கிராம அளவில் ஒருங்கிணைத்து செவ்வனே செயல்படுத்திட 600 ஊராட்சிகளில் 600 புதிய கிராமச் செயலகங்கள் இந்த ஆண்டே கட்டப்படும்"

2. மேற்காணும் அறிவிப்பினை செயல்படுத்தும் விதமாக ஊராட்சிகளின் செயல்பாட்டினை அதிகப்படுத்தி, மக்களாட்சியின் மகத்துவத்தினை அனைத்து ஊரக மக்களும் பயன்படுத்தி அறியும் வகையில், 600 கிராமச் செயலகங்களை கட்டுவதற்கு உரிய வழிகாட்டு நெறிமுறைகளுடன் நிர்வாக அனுமதி அளித்து, மேலே ஐந்தில் படிக்கப்பட்ட அரசாணையில் ஆணை வெளியிடப்பட்டது.

3. மேலும், மேலே மூன்றாவதாகப் படிக்கப்பட்ட அரசு கடிதத்தில், இத்திட்டத்திற்கு தேவையான நிதி ஒப்பளிப்பு பெறுவதற்கு விரிவான திட்ட மதிப்பீட்டு அறிக்கையினை அனுப்பி வைக்குமாறு ஊரக வளர்ச்சி மற்றும் ஊராட்சி ஆணையர் கேட்டுக் கொள்ளப்பட்டார். மேலே நான்காவதாகப் படிக்கப்பட்ட கடிதத்தில், 600 ஊராட்சிகளில் கிராமச் செயலகங்கள் கட்டுவதற்கு

நிதி ஒப்பளிப்பு வழங்க ஏதுவாக, மாதிரி வடிவமைப்பு-Iஇல், 1568 சதுர அடிக்கு ரூ.42.65 இலட்சம் மதிப்பீட்டிலும், மாதிரி வடிவமைப்பு- IIஇல் 1472 சதுர அடிக்கு ரூ.39.95 இலட்சம் மதிப்பீட்டிலும் விரிவான திட்ட மதிப்பீட்டு அறிக்கையினை அரசுக்கு அனுப்பி நிதி ஒப்பளிப்பினை வழங்குமாறு ஊரக வளர்ச்சி மற்றும் ஊராட்சி ஆணையர் அரசைக் கோரியுள்ளார்.

4. ஊரக வளர்ச்சி மற்றும் ஊராட்சி ஆணையரின் நிதி ஒப்பளிப்பு கோரும் கருத்துருவினை அரசு நன்கு ஆய்வு செய்து, அதனை ஏற்று 600 ஊராட்சிகளில், 600 புதிய கிராமச் செயலகங்கள், வடிவமைப்பு-Iஇல், 1568 சதுர அடிக்கு ரூ.42.65 இலட்சம் மதிப்பீட்டிலும், வடிவமைப்பு-IIஇல், 1472 சதுர அடிக்கு ரூ.39.95 இலட்சம் மதிப்பீட்டிலும் கட்டப்படுவதற்கும், அதற்கான ரூ.243.00 கோடியை நிதி ஆதாரங்களான பஞ்சாயத்து பொது நிதி அல்லது மாநில நிதி ஆணைய நிதி / மத்திய நிதி ஆணைய நிதி மற்றும் மகாத்மா காந்தி தேசிய ஊரக வேலை உறுதித் திட்டத்துடன் இணைத்து செயல்படுத்தப்படவுள்ளதால் அதனை ஏற்றும், இத்திட்டத்திற்கு தேவைப்படும் எந்த ஒரு கூடுதல் நிதிப் பங்களிப்பையும் மாநில அரசு ஏற்றுக் கொள்ளாது என்ற நிபந்தனைக்குட்பட்டு, ஊரக வளர்ச்சி மற்றும் ஊராட்சி ஆணையருக்கு அனுமதி அளித்தும் ஆணையிடப்படுகிறது. மேலும், கிராம செயலகக் கட்டடங்கள் கட்டுவது தொடர்பான விரிவான திட்ட மதிப்பீட்டு அறிக்கை இவ்வரசாணையின் இணைப்பில் கொடுக்கப்பட்டுள்ளன.

5. இவ்வரசாணை நிதித் துறையின் அ.சா.எண்.39/DS(RR)/RD/22, நாள் 19.12.2022இன் மூலம் பெற்ற ஒப்புதலுடன் வெளியிடப்படுகிறது.

(ஆளுநரின் ஆணைப்படி)

பெ.அமுதா

அரசு முதன்மைச் செயலாளர்

பெறுநர்

ஊரக வளர்ச்சி மற்றும் ஊராட்சி ஆணையர், சென்னை 15.

அனைத்து மாவட்ட ஆட்சியர்கள்(சென்னை நீங்கலாக)

(ஊரக வளர்ச்சி மற்றும் ஊராட்சி ஆணையர் வழியாக.)

நகல்

மாண்புமிகு முதலமைச்சர் அவர்களின் செயலாளர்/ அலுவலகம்,
சென்னை -9

மாண்புமிகு ஊரக வளர்ச்சித்துறை அமைச்சரின்

முதுநிலை உதவியாளர், சென்னை-9

மாண்புமிகு நிதி மற்றும் மனிதவள மேலாண்மைத் துறை

அமைச்சரின் முதுநிலை உதவியாளர், சென்னை-9

ஊரக வளர்ச்சி மற்றும் ஊராட்சி துறை முதன்மைச் செயலாளரின்

முதுநிலை நேர்முக உதவியாளர், சென்னை-9

நிதி(உ.வ/வ.செ.பொ1/2/வ.வ.1)த்துறை, சென்னை -9

அனைத்து திட்டப் பிரிவுகள், ஊரக வளர்ச்சி மற்றும் ஊராட்சித் துறை,
தலைமைச் செயலகம், சென்னை- 9

இருப்புக் கோப்பு /உதிரி நகல்

கோ.எண்.12136/மா.அ.தி.3/2022

//ஆணைப்படி அனுப்பப்படுகிறது//

98.21.2022
21-12-2022
பிரிவு அலுவலர்.

21/12/22

ANNEXURE

CONSTRUCTION OF VILLAGE SECRETARIAT OPTION 1

Abstract Estimate

Rs. 42,65,000/-

SI No	Quantity	Description	Rate	Per	Amount
1	45.09	Earth work excavation for foundation in all soils and sub-soils and to full depth as may be directed except in rock requiring blasting inclusive of shoring shuttering, bailing out water wherever necessary and depositing the surplus earth within the compound in places shown by the departmental officers with an initial lead of 10 mts and initial lift of 2 mts. and clearing and levelling the site, etc., complete complying with standard specification.	268.19	Cu.m	12,093.00
1a	24.38		331.07	Cu.m	8,071.00
1b	90.67		343.85	Cu.m	31,177.00
2	92.77	Refilling with Excavated Earth including all charges etc	36.95	Cu.m	3,428.00
3	6.64	Supplying and filling in foundation, basement, etc with filling sand in layers of not more than 15 cm thick well watered, rammed and consolidated etc. complete complying with standard specification and as directed by the departmental officers.	1683.30	Cu.m	11,177.00
4	67.54	Supply and filling the basement with conveyed excavated earth other than sand complying the standard specification	244.70	Cu.m	16,527.00
5	29.60	Cement Concrete 1:4:8 (One Cement, Four sand and Eight hard broken stone jelly) using 40 mm gauge hard broken granite stone jelly for foundation including dewatering wherever necessary and laid in layers of not more than 15 cm thick well rammed, consolidated and curing etc. complete complying with standard specification	4959.34	Cu.m	146,797.00
6		Brick work in Cement Mortar 1:5 using best quality of country bricks of size 8-3/4" x 4-1/4" x 2-1/4" for foundation and basement including curing, etc., complete complying with standard specification.			
a)	22.63	below basement	5696.65	Cu.m	128,915.00
b)	60.82	above basement	5771.45	Cu.m	351,019.00
7		Supplying and erecting steel centering including necessary supports for plane surfaces for Reinforced Cement Concrete works such as column footings, column pedestals, plinth beams, grade beams, staircase steps, etc. which require only nominal strutting us			
a	132.97	below basement	455.50	Sq.m	60,568.00
b)	394.05	ground level to basement	911.00	Sq.m	358,983.00
8		Reinforced Cement Concrete 1:11/2:3(One Cement, One and a half sand and Three hard broken stone jelly) using 20 mm gauge hard broken granite stone jelly for all RCC items of works excluding cost of reinforcement grill and fabricating charges centering and shuttering but including laying, vibrating with mechanical vibrators, finishing, curing, etc. and providing fixtures like fan clamps in the RCC floor / roof slabs wherever necessary and bearing surfaces of walls, beams etc. shall be finished smooth with Cement Mortar 1:3 (One Cement and Three Sand) etc., complete complying with standard specification and as directed by the departmental officers			
	16.68	below basement	8423.50	Cu.m	140,529.00
	49.25	basement To ground floor	8537.10	Cu.m	420,452.00

9	8.20	Supplying, fabricating and placing in position Mild Steel / Ribbed Tor Steel grills for all RCC works as per design given including cost of steel and G.I. binding wire in all floors etc. complete complying with standard specification. (Contractor has to make his own arrangements for the supply of steel and binding wire)	87400.75	mT	716,686.00
10	10.01	Weathering course in brick jelly lime concrete using broken brick jelly of size 20mm uniform gauge in pure slaked lime (no sand to be used) to the proportion of brick jelly to lime being 32:12.5 by volume and laid over the RCC roof slab in a single layer of required slope and finished by beating the concrete with wooden beaters of approved pattern, keeping the surface constantly wet by sprinkling lime jaggery water, etc., complete as per standard specification and as directed by the departmental officers.	3741.47	Cu.m	37,452.00
11	143.44	Finishing the top of the roof with one course of Machine Pressed Tiles of size 23 cm x 23x2 cm of approved quality laid in CEMENT MORTAR 1:3(One cement and three sand) 12 mm thick mixed with water proofing compound conforming to ISS by 2% weight of cement used and the joint pointed neatly to full depth of tiles with the same water proofing compound mixed with cement mortar, red oxide, etc., complete complying with standard specification	1151.26	Sq.m	165,140.00
12	3.78	Supplying and fabrication of the following rolling Shutters including cost and conveyance and all charges etc complete.	2171.00	Sq.m	8,206.00
13	87.56	Paving the floor with kota stone slab of size 600 x 600 of 18 / 20mm (un-polished) antiskid in all floors laid in of cement mortar 1:3 (one cement three sand), 20mm thick and pointed with colour cement neatly including polishing with polishing stone and oxalic acid etc., so as to perfectly smooth and glossy and including hire charges for polishing machine and power consumption charges etc. The kota stone slabs and other materials to be used shall be got approved by the Executive Engineer concerned before use on work, etc., complete as per standard specification.	1416.07	Sq.m	123,994.00
14	54.63	Providing granolithic floor finish in cement concrete 1:2:4 mix using 10-12mm ISS metal to 25mm thick including cost and conveyance of all materials to site and all labour charges for mixing, laying, curing etc complete for 10 cum	152.97	Sq.m	8,356.00
15	6.58	Paving the flooring with special type of flooring tiles (Cement based Hydraulically pressed Anti skid tiles (20mm thick) in CM 1:3, 20mm thick	1311.81	Sq.m	8,635.00
16	21.78	Dadoing walls with best approved quality, colour glazed tiles of 150mm x 150mm x 6mm size set in Cement Mortar 1:2 (One Cement and Two sand) 10mm thick and pointing the joints with white cement mixed with colouring pigments at the rate of 0.40 Kg. / sq.m. neatly in all floors, curing, etc., complying with standard specification and as directed by the departmental officers.	1245.15	Sq.m	27,119.00
17	14.00	Supplying and fixing in position best approved of BIS quality PVC rain water down fall pipes of 110mm dia., having a pressure of 4 kg. / sq.cm including cost of necessary PVC shoe, PVC bend, cast iron gratings of required diameter and special clamps, brass screws, nails, etc., and fixing of cast iron gratings at junction of parapet and the RCC roof slab including finishing neatly etc., complete. The rate shall be inclusive of cast of removable cast iron grating. The PVC pipe shall be fixed in wall with special type of "U" clamp at the centre of the pipe line in addition to those for more than 3.0 metre pipe length, etc., complete complying with standard specification.	568.11	RM	7,954.00

18	39.00	Supplying and fixing of M.S.grill of approved design for grill gate, grill work to doors and windows openings etc., using necessary mild steel etc., complete complying with standard specification.	100.50	KG	3,920.00
19	767.76	Plastering with Cement Mortar 1:5 (One cement and Five sand), 12mm thick in all floors including curing etc. complete complying with standard specification and as directed by the departmental officers.	240.26	Sq.m	184,460.00
20	158.82	Special ceiling plastering and finishing the exposed surface of all RCC items of work such as slabs, beams, sunshades, facia, canopy slab, staircase waist slab, landing slab etc., with Cement Mortar 1:3 (One Cement and Three Sand) 10mm thick including hacking the surfaces, providing cement mortar nosing, beading for sunshades, staircases, steps, landing slabs and curing, etc., in all floors complying with standard specification and as directed by the departmental officers	275.01	Sq.m	43,677.00
21		Painting two coats of newly plastered wall surface with ready mixed plastic emulsion paint of first class quality and of approved colour over a priming coat including thorough scrapping, clean removal of dirt, and including necessary plaster of Paris putty, wherever required etc., complete complying with standard specification.			
	849.14	wall painting	222.66	Sq.m	189,069.00
22	94.60	Painting new iron works such as steel doors, windows, ventilators, window bars, balustrades etc., with two coats of best approved first quality and colour of synthetic enamel paint over the existing red oxide priming coat in all floors excluding cost of priming coat etc., complete complying with standard specification. (The make, quality and colour of paint should be got approved by the Executive Engineer before use on works.)	133.79	Sq.m	12,657.00
23	14.73	Manufacturing supplying and fixing of steel door with the following specification MS angels of size 40x40x6mm are used for the outer frames and M.S. angles of size 35x35x6mm for the shutter frames stiffeners with 32 x 6mm M.S flat is provided at required intervals in the shutter frame. 18-gauge C.R. sheet laid as panel in the shutter and welded intact. M.S. flat 18x5mm is welded over the 32 x 6mm M.S. flat sandwiching the C.R. sheet in between additional stiffeners with 18x5mm M.S. flat is provided diagonally at the rear side of the shutter, 3nos. of hinges in case of single leaf and 6nos. of hinges in double leaves shutter to be provided 6nos. of holdfasts 120 mm in length made of angle section spliced at the ends are welded to the outer frames of the door. Tower bolts 2nos. one at the top and the other at the bottom are provided 1no. Aldrop is provided incase of double leaf door at lock rail section in the door in single leaf door, one more aldrop is provided in the inner lock rail section of the door One rotating locking arrangements for the inner side of the door and additional provision for locking arrangements for lock is provided on the rear side of the door at an appropriate place. Incase of double leaf door M.S.Flat 32 x 3mm at 1.1Kg/m is provided on the one shutter to conceal the gap between the two shutters.at an appropriate place in the door. A tie bar is provided at the bottom of the frame to prevent twisting of frame during transportation and fixing. All members are given a coat of red oxide primer as directed by the departmental officers. The rate includes cost of all materials, labour charges, transportation to site of work, loading, un loading and all other incidental charges etc.,	4265.10	Sq.m	62,825.00

24	12.87	Fabricating, Supplying and fixing in position of steel sheeted windows (Two Leaves) with the following specifications. Outer frames of windows made of 'Z' section F7D of size 33 x 25 x 3mm at 1.419 kg/ m and mullion 'J' section (F4B) of size 46x25x3mm at 2.28kg/m and shutter section of made of F7D of 33x25x3mm at 1.419 kg/m as specified in IS 7452/1990. Each openable shutter should not exceed a width of 600mm to enable separate operations and easy maintenance. The panel of the shutters to be covered with 18 gauge cold rolled sheet of superior quality and welded intact with shutter frames. Horizontal stiffeners using 18x5mm MS Flat at 0.70kg/m at 3 Nos. for each shutter and additional diagonal stiffners of the same MS flats at all the four corners of each shutters to the suitable length welded to the shutters, for holding the CR Sheets in position firmly. 2 numbers of sturdy hinges and one number of handle-cum-latch of special type made with 18x5mm MS flats are revetted to the shutters at an appropriate height in window. suitable opening is left for its easy operation. a stopper square rod for handle is provided in the mullion section at suitable place to catch the window handle. each window shutter having an adjustable stay made out of 18 x 5mm at 0.70 kg/ m MS flat of length 320mm with three adjustable position. A matching peg is provided in the outer frame of the window at suitable place. 4 Nos. of hold fasts of 120mm length spliced at the ends are welded to the outer frame of the window by using MS flat of 18x5mm at 0.70kg/m, welded to the shutter at two place equivalent from each from top and bottom of the shutter.	4156.95	Sq.m	53,500.00
25	2.16	Fabrication, supply and fixing in position of 'N' type ventilators using M.S. angle of size 25 x 25 x5 mm for frame and M.S. Flat of size 20 x 3 mm for fixing the weld mesh and using 25 x 22 x3 mm 'T' section for frame glass. Special type of Hold fast welded to the frame of 45 degree inclined towards centre for wall and fixing the weld mesh 25mm square including cost of 3mm thick pinheaded glass panes for all panels and fixing the glass panels with necessary clips & putties with required bolts, nuts and washers and one coat of red oxide primer etc. including necessary dismantling, making holes in RCC columns, beams, masonry wherever necessary with power drill to the extent required and made good to the original conditions after fixing as directed by the departmental	2333.10	Sq.m	5,039.00
26	3.15	Supply and Fixing of Collapsible gate including all labour charges	2429.89	Sq.m	7,654.00
27	1.00	Provision for European water closet	5073	Nos	5,073.00
28	3.00	Provision for Indian Type closet	5002.89	Nos	15,009.00
29	1.00	Provision for wash basin	3687.79	Nos	3,688.00
30	2.00	Provision for pvc nahini trap	570.82	Nos	1,142.00
31	4.00	Provision for pillar tap	352.65	Nos	1,411.00
32	2.00	Provision for angle Cock	922.65	Nos	1,845.00
33	2.00	Provision for angle cock two way	2060.00	Nos	4,120.00

34	1.00	Provision for Grab bar diabled person in toilet	750.00	LS	750.00
35		Provision water supply, sanitary arrangements pipe line,UPVC specials etc		LS	10000.00
36	500.00	provision for PVC tank	10.05	litre	5,025.00
37		Provision for Electrification arrangements			
	26.00	Light Point/Fan Point SD25	2074.60	Nos	53,940.00
	6.00	Bulk Head fitting with 40w BULB SD 81	309.10	Nos	1,855.00
	15.00	SD88 4ft 40W tube	691.90	Nos	10,379.00
	1.00	SD127 TN meter board	2059.20	Nos	2,059.00
	10.00	SD12 concealed plug point	2194.50	Nos	21,945.00
	7.00	SD107 Ceiling fan 1200mm	2344.10	Nos	16,409.00
	4.00	SD 114 300mm exhaust fan	2362.80	Nos	9,451.00
	1.00	PWD EARTHING	2383.70	Nos	2,384.00
	1.00	SERVICE CONNECTON	3500.00	EACH	3,500.00
	3.00	servicve pipe	125.00	m	375.00
	15.00	SD65 2x 4sqmm	138.60	m	2,079.00
	15.00	SD66 2x 6 sqmm	178.20	m	2,673.00
38	5.37	Provision for Galvinised color sheet -Verandah /Sitout	651.00	Sqm	3,496.00
39	45.19	Provision for closed wooden Shelf/Rack arrangement with locker using Commercial BWP/BWR plywood of 19mm thick with 0.5mm laminate sheet on bothsides including accessories like hinges ,door handle etc	900.00	Sqft	40,671.00
40	11.28	Provision for Shelf Arrangemet in Store,record room using Cuddapah slab	1177.40	Sqm	13,281.00
41		Provision for RWH Struture		LS	9000.00
41a	6.00	Provision for TactileFlooring For Disabled person	2040.00	Sqm	12,240.00
		Sub total			3609879
42		Provision for Name Board			4500
43		Provision for GST @ 18 %			649778
44		Provision for Photographic charges		LS	500.00
45		Contingencies		LS	343.00
		GRAND TOTAL			4265000

DETAILED ESTIMATE

Construction of Village Secretariat option 1								
Name of Panchayat:								
S. No	Description of work	Nos.			L	B	D	Quantity
1	Earthwork excavation in all clauses of soils and depositing on bank with initial lead and lift for foundation as per ss20B							
	Footing for column C1 (230 mmx 450mm)	1	x	2	1.80	2.10	0.30	2.27
	Footing for colimn C2 (230 mm x 230 mm)	1	x	2	1.50	1.50	0.30	1.35
	Footing for column C3(230 mm x 375 mm)	1	x	18	1.50	1.80	0.30	14.58
	Grade beam- alround	1	x	1	52.35	0.45	0.30	7.07
	Grade beam - A3 -B3, A4-B4,A2-B2	1	x	3	3.66	0.45	0.30	1.48
	Grade beam B1- B6	1	x	1	17.16	0.45	0.30	2.32
	Grade beam B3 - E3, B4- E4,B2-E2	1	x	3	3.35	0.45	0.30	1.36
	Grade Beam A7-C7	1	x	1	4.69	0.45	0.30	0.63
	Grade Beam E3-F3 & E4- F4	1	x	2	3.00	0.45	0.30	0.81
	Grade beam F3-F4	1	x	1	4.23	0.45	0.30	0.57
	Grade beam staircase front portion C7	1	x	1	2.52	0.45	0.30	0.34
	Deduction for footing earth work (F1)	-1	x	2	1.80	0.45	0.30	-0.49
	Deduction for footing earth work (F2)	-1	x	2	1.50	0.45	0.30	-0.41
	Deduction for footing earth work (F3)	-1	x	2	1.50	0.45	0.30	-0.41
	Ramp wall- alround foundation	1	x	1	11.81	0.45	0.30	1.59
	Sitout cum verandah wall	1	x	1	6.73	0.45	0.30	0.91
	Step	1	x	1	4.46	1.20	0.15	0.80
	Septic tank	1	x	1	2.66	2.16	1.60	9.19
	Step for store	1	x	1	4.12	1.10	0.15	0.68
	Step for rear toilet	1	x	1	2.75	1.10	0.15	0.45
	Total Quantity							45.09
1a	Earthwork excavation in all clauses of soils and depositing on bank with initial lead and lift for foundation as per ss20B							
	Footing for column C1 (230 mmx 450mm)	1	x	2	1.80	2.10	0.30	2.27
	Footing for colimn C2 (230 mm x 230 mm)	1	x	2	1.50	1.50	0.30	1.35
	Footing for column C3(230 mm x 375 mm)	1	x	18	1.50	1.80	0.30	14.58
	Grade beam- alround	1	x	1	19.72	0.45	0.15	1.33
	Grade beam - A3 -B3, A4-B4,A2-B2	1	x	3	3.66	0.45	0.15	0.74
	Grade beam B1- B6	1	x	1	17.16	0.45	0.15	1.16
	Grade beam B3 - E3, B4- E4,B2-E2	1	x	3	3.35	0.45	0.15	0.68
	Grade Beam A7-C7	1	x	1	4.69	0.45	0.15	0.32
	Grade Beam E3-F3 & E4- F4	1	x	2	3.00	0.45	0.15	0.41
	Grade beam F3-F4	1	x	1	4.23	0.45	0.15	0.29
	Grade bean staircase front portion C7	1	x	1	2.52	0.45	0.15	0.17
	Deduction for footing earth work (F1)	-1	x	2	1.80	0.45	0.15	-0.24
	Deduction for footing earth work (F2)	-1	x	2	1.50	0.45	0.15	-0.20
	Deduction for footing earth work (F3)	-1	x	2	1.50	0.45	0.15	-0.20
	Septic tank	1	x	1	2.66	2.16	0.30	1.72

	Total Quantity							24.38
1b	Earthwork excavation in all clauses of soils and depositing on bank with initial lead and lift for foundation as per ss20B							
	Footing for column C1 (230 mmx 450mm)	1	x	2	1.80	2.10	1.40	10.58
	Footing for colimn C2 (230 mm x 230 mm)	1	x	2	1.50	1.50	1.40	6.30
	Footing for column C3(230 mm x 375 mm)	1	x	18	1.50	1.80	1.40	68.04
	Septic tank	1	x	1	2.66	2.16	1.00	5.75
	Total Quantity							90.67
2	Supplying and filling in foundation, basement, etc with filling sand in layers of not more than 15 cm thick well watered, rammed and consolidated etc. complete complying with standard specification and as directed by the departmental officers.							
	Foundation:							
	Footing for column C1 (230 mmx 450mm)	1	x	2	1.80	2.10	0.10	0.76
	Footing for colimn C2 (230 mm x 230 mm)	1	x	2	1.50	1.50	0.10	0.45
	Footing for column C3(230 mm x 375 mm)	1	x	18	1.50	1.80	0.10	4.86
	Septic tank	1	x	1	2.66	2.16	0.10	0.57
	Total Quantity							6.64
3	Cement concrete 1:4:8 mix using 40mm ISS HBG metal including cost and conveyance of all matials to site and all labour charges etc., complete.							
	Foundation:							
	Footing for column C1 (230 mmx 450mm)	1	x	2	1.80	2.10	0.10	0.76
	Footing for colimn C2 (230 mm x 230 mm)	1	x	2	1.50	1.50	0.10	0.45
	Footing for column C3(230 mm x 375 mm)	1	x	18	1.50	1.80	0.10	4.86
	Grade beam- around	1	x	1	52.35	0.45	0.10	2.36
	Grade beam - A3 -B3, A4-B4,A2-B2	1	x	3	3.66	0.45	0.10	0.49
	Grade beam B1- B6	1	x	1	17.16	0.45	0.10	0.77
	Grade beam B3 - E3, B4- E4,B2-E2	1	x	3	3.35	0.45	0.10	0.45
	Grade Beam A7-C7	1	x	1	4.69	0.45	0.10	0.21
	Grade Beam E3-F3 & E4- F4	1	x	2	3.00	0.45	0.10	0.27
	Grade beam F3-F4	1	x	1	4.23	0.45	0.10	0.19
	Grade bean staircase front portion C7	1	x	1	2.52	0.45	0.10	0.11
	Deduction for footing earth work (F1)	-1	x	2	1.80	0.45	0.10	-0.16
	Deduction for footing earth work (F2)	-1	x	2	1.50	0.45	0.10	-0.14
	Deduction for footing earth work (F3)	-1	x	2	1.50	0.45	0.10	-0.14
	Ramp wall- around foundation	1	x	1	19.74	0.45	0.10	0.89
	Sitout cum verandah wall	1	x	1	6.73	0.45	0.10	0.30
	Step	1	x	1	4.46	1.20	0.10	0.54
	Septic tank	1	x	1	2.46	6.46	0.10	1.59
	Step for store	1	x	1	4.12	1.10	0.10	0.45
	Step for rear toilet	1	x	1	2.75	1.10	0.10	0.30
	FLOORING							
	Store	1	x	1	6.20	3.66	0.10	2.27
	President room	1	x	1	4.00	3.66	0.10	1.46
	Meeting hall	1	x	1	6.50	3.66	0.10	2.38
	Vao room and toilet	1	x	1	5.27	3.35	0.10	1.76

	D/F Closet	-1	x	1	0.50	0.40	0.10	-0.02
	Waiting room	1	x	1	6.57	3.35	0.10	2.20
	Record room	1	x	1	1.40	1.80	0.10	0.25
	Toilet	1	x	2	1.20	1.09	0.10	0.26
	D/F Closet	-1	x	2	0.50	0.40	0.10	-0.04
	Portico	1	x	1	4.46	3.00	0.10	1.34
	Ramp longer side	1	x	1	7.93	1.50	0.10	1.19
	Ramp shorter side	1	x	1	5.23	1.50	0.10	0.78
	Platform upto record room of Vao office	1	x	1	3.58	1.50	0.10	0.54
	Sitoout cum verandah	1	x	1	6.50	1.05	0.10	0.68
	Total Quantity							29.60
4	Refilling with Excavated Earth including all charges etc							
	Footing for column C1 (230 mmx 450mm)	1	x	2	1.80	2.10	2.00	15.12
	Footing for colimn C2 (230 mm x 230 mm)	1	x	2	1.50	1.50	2.00	9.00
	Footing for column C3(230 mm x 375 mm)	1	x	18	1.50	1.80	2.00	97.20
	Deduct for Sand/PCC Column C1 (230 mmx	-2	x	2	1.80	2.10	0.10	-1.51
	Deduct for Sand/PCC column C2 (230 mm x	-2	x	2	1.50	1.50	0.10	-0.90
	Deduct for Sand/PCC column C3(230 mm x	-2	x	18	1.50	1.80	0.10	-9.72
	D/f Footing and Column							-16.42
	Total Quantity							92.77
5	Collection and supply of CONVEYED EARTH filling in to the basement including cost and conveyance to the siteand all labour charges for filling							
	Store	1	x	1	6.20	3.66	0.50	11.35
	President room	1	x	1	4.00	3.66	0.50	7.32
	Meeting hall	1	x	1	6.50	3.66	0.50	11.90
	Vao room and toilet	1	x	1	5.27	3.35	0.50	8.82
	D/F Closet	-1	x	1	0.50	0.40	0.50	-0.10
	Waiting room	1	x	1	6.57	3.35	0.50	11.00
	Record room	1	x	1	1.40	1.80	0.50	1.26
	Toilet	1	x	2	1.20	1.09	0.50	1.30
	D/F Closet	-1	x	2	0.50	0.40	0.50	-0.20
	Portico	1	x	1	4.46	3.00	0.50	6.69
	Ramp longer side	1	x	1	11.51	1.27	0.15	2.19
	Ramp shorter side	1	x	1	5.23	1.04	0.15	0.82
	Platform upto record room of Vao office	1	x	1	3.58	1.50	0.50	2.69
	Sitoout cum verandah	1	x	1	6.50	0.77	0.50	2.50
	Total Quantity							67.54
6	Brick work in C.M 1:5 mix using country bricks ground moulded of size 23x11x7 cu.cm including cost & conveyance of all materials to site and all labour charges etc., complete.							
	Basement :-							
	Wall alround	1	x	1	52.35	0.23	0.60	7.22
	Wall- A3 -B3, A4-B4	1	x	2	3.66	0.23	0.60	1.01
	Wall B1- B6	1	x	1	17.16	0.23	0.60	2.37
	Wall B3 - E3, B4- E4	1	x	2	3.35	0.23	0.60	0.92
	Wall A7-C7	1	x	1	4.69	0.23	0.60	0.65

Wall E3-F3 & E4- F4	1	x	2	3.00	0.23	0.60	0.83
Wall F3-F4	1	x	1	4.23	0.23	0.60	0.58
Septic tank around	1	x	1	7.92	0.23	1.50	2.73
Step 1-portico	1	x	1	4.46	0.90	0.15	0.60
Step 2	1	x	1	4.46	0.60	0.15	0.40
Step 3	1	x	1	4.46	0.30	0.15	0.20
Step 1- store	1	x	1	4.12	0.90	0.15	0.56
Step 2	1	x	1	4.12	0.60	0.15	0.37
Step 3	1	x	1	4.12	0.30	0.15	0.19
Step 1- rear toilet	1	x	1	2.75	0.30	0.15	0.12
Ramp wall - below G.L	1	x	1	19.74	0.34	0.20	1.34
Ramp wall - Above ground wall	1	x	1	11.51	0.23	0.30	0.79
Ramp wall - Above ground wall	1	x	1	5.23	0.23	0.30	0.36
Sit out cum verandah below G.L	1	x	1	6.73	0.34	0.20	0.46
Sit out cum verandah above G.L	1	x	1	6.73	0.23	0.60	0.93
Total Quantity							22.63
Super Structure :-							
Upto lintel level							
Wall around	1	x	1	52.35	0.23	2.10	25.29
Wall- A3 -B3, A4-B4	1	x	2	3.66	0.23	2.10	3.54
Wall B1- B6	1	x	1	17.16	0.23	2.10	8.29
Wall B3 - E3, B4- E4	1	x	2	3.35	0.23	2.10	3.24
Wall A7-C7	1	x	1	4.69	0.23	2.10	2.26
Wall E3-F3 & E4- F4	1	x	2	3.00	0.23	2.10	2.90
Wall F3-F4	1	x	1	4.23	0.23	2.10	2.04
Partition wall in Vao room	1	x	1	3.35	0.12	2.10	0.81
Partition wall for record and toilet in Vao room	1	x	1	1.80	0.12	2.10	0.43
Partition wall for toilet in president room	1	x	1	2.32	0.12	2.10	0.56
Partition wall for record room in Panchayat	1	x	1	1.80	0.12	2.10	0.43
Partition wall between toilet beneath	1	x	1	1.09	0.12	2.10	0.26
	1	x	2	2.63	0.12	2.10	1.27
Shelf wall in store	1	x	2	0.12	0.45	2.10	0.22
Shelf wall in meeting hall	1	x	3	0.12	0.45	2.10	0.33
Support wall for cudappah slab in waiting	2	x	2	0.12	0.45	0.60	0.12
Staircase step	0.5	x	25	1.20	0.30	0.15	0.68
D/F Door D	-1	x	3	0.90	0.23	2.10	-1.30
D/F Door D1	-1	x	5	0.75	0.23	1.80	-1.55
D/F Door D2	-1	x	1	1.10	0.23	2.10	-0.53
D/F Window W1	-1	X	3	0.90	0.23	1.30	-0.81
D/F Window W2	-1	X	6	1.20	0.23	1.30	-2.15
D/F Rolling shutter	-1	x	1	1.80	0.23	2.10	-0.87
D/F Collapsing gate	-1	x	1	1.50	0.23	2.10	-0.72
D/F Portico open	-1	x	2	3.00	0.23	2.10	-2.90
	-1	x	1	4.00	0.23	2.10	-1.93

Lintel top level to roof beam bottom								
Wall alround	1	x	1	52.35	0.23	0.47	5.66	
Wall- A3 -B3, A4-B4	1	x	2	3.66	0.23	0.47	0.79	
Wall B1- B6	1	x	1	17.16	0.23	0.47	1.85	
Wall B3 - E3, B4- E4	1	x	2	3.35	0.23	0.47	0.72	
Wall A7-C7	1	x	1	4.69	0.23	0.47	0.51	
Partition wall in Vao room	1	x	1	3.35	0.12	0.72	0.28	
Partition wall for record and toilet in Vao room	1	x	1	1.80	0.12	0.72	0.15	
Partition wall for toilet in president room	1	x	1	2.32	0.12	0.72	0.19	
Partition wall for record room in Panchayat	1	x	1	1.80	0.12	0.72	0.15	
D/F Ventilator V	-1	x	4	0.60	0.23	0.45	-0.25	
D/F Ventilator V1	-1	x	2	0.90	0.23	0.60	-0.25	
D/F Column C1	-1	x	2	0.23	0.45	0.47	-0.10	
D/F Column C2	-1	x	2	0.30	0.30	0.47	-0.08	
D/F Column C3	-1	x	18	0.23	0.38	0.47	-0.73	
Parapet wall	1	x	1	52.35	0.23	0.75	9.03	
Ramp Handrail	1	x	1	15.28	0.12	0.90	1.58	
Ramp Handrail	1	x	1	6.43	0.12	0.90	0.67	
Portico three side wall	1	x	1	10.69	0.23	0.30	0.74	
Total Quantity							60.82	
7	Supplying and erecting centering for sides & soffits including supports and strutting up to 3.29m height for plane surfaces in all floors with all cross bracing using mild steel sheets of size 90cm x 60cm and 10 gauge stiffened welded with mild steel angles of size 25mm x 25mm x 3mm for boarding laid over country wood poists of size 10cm x 6.5cm dia spaced at about 90cm center to center etc., complete complying with std. Specifications and as directed. For RCC floor slab, roof slab, rectangular, square Tee or Ell beams, lintel, staircase wise slab, landing slab, landing beam, portico beam, etc.,							
Below Ground Level :-								
Coloumn Footing Sides F1	1	x	2	7.00		0.20	2.80	
Coloumn Footing Sides F2	1	x	2	5.20		0.20	2.08	
Coloumn Footing Sides F3	1	x	18	5.80		0.20	20.88	
For Coloumn Post :-								
Coloumn Sides Upto Grade Beam C1	1	x	2	1.36		0.98	2.65	
Coloumn Sides Upto Grade Beam C2	1	x	2	1.20		0.98	2.34	
Coloumn Sides Upto Grade Beam C3	1	x	18	1.21		0.98	21.24	
Grade beam- alround	2	x	1	52.35		0.38	39.26	
Grade beam - A3 -B3, A4-B4	2	x	3	3.66		0.38	8.24	
Grade beam B1- B6	2	x	1	17.16		0.38	12.87	
Grade beam B3 - E3, B4- E4	2	x	3	3.35		0.38	7.54	
Grade Beam A7-C7	2	x	1	4.69		0.38	3.51	
Grade Beam E3-F3 & E4- F4	2	x	2	3.00		0.38	4.50	
Grade beam F3-F4	2	x	1	4.23		0.38	3.17	
Grade beam staircase front portion C7	2	x	1	2.52		0.38	1.89	
Total Quantity							132.97	
Rate for Sunshade :-								

Sunshade W2	1	x	3	1.66	0.6		2.99
Sides	1	x	3	3.92		0.06	0.74
Portico	1	x	1	5.66	0.6		3.40
	1	x	2	3.23	0.6		3.88
Sides	1	x	1	12.12		0.06	0.73
Sill Slab Sides	8	x	2	1.66		0.075	1.99
Loft	1	x	2	3.35	0.45		3.02
Sides	1	x	2	3.35		0.05	0.34
Loft in store	1	x	1	6.20	0.45		2.79
Sides	1	x	1	6.20		0.05	0.31
Loft in president room	1	x	1	4.00	0.45		1.80
Sides	1	x	1	4.00		0.05	0.20
							22.16
Rate For Column (G.L to Parapet wall ht)							
Coloumn C1	1	x	2	1.36		3.92	10.66
Coloumn C2	1	x	2	0.92		3.92	7.21
Coloumn C3	1	x	18	1.21		3.92	85.38
							103.25
Lintel Tie beam :-							
Lintel- alround	2	x	1	52.35		0.23	24.08
Lintel - A3 -B3, A4-B4	2	x	2	3.66		0.23	3.37
Lintel B1- B6	2	x	1	17.16		0.23	7.89
Lintel B3 - E3, B4- E4	2	x	2	3.35		0.23	3.08
Lintel A7-C7	2	x	1	4.69		0.23	2.16
Lintel E3-F3 & E4- F4	2	x	2	3.00		0.23	2.76
Lintel F3-F4	2	x	1	4.23		0.23	1.95
							45.29
Roof beam and slab:-							
Roof Beam- alround	2	x	1	52.35		0.25	26.18
Extra depth- store and Vao room roof beam	2	x	3	6.20		0.08	2.79
Extra depth -Meeting hall roof beam	2	x	2	6.50		0.08	2.08
Roof Beam A3 -B3, A4-B4	2	x	2	3.66		0.25	3.66
Roof Beam B1- B6	2	x	1	17.16		0.25	8.58
Roof Beam B3 - E3, B4- E4	2	x	2	3.35		0.25	3.35
Roof Beam A7-C7	2	x	1	4.69		0.25	2.34
Roof Beam E3-F3 & E4- F4	2	x	2	3.00		0.25	3.00
Roof Beam F3-F4	2	x	1	4.23		0.25	2.12
Landing beam	2	x	1	2.40		0.25	1.20
Waist slab 1	1	x	1	1.09	3.60		3.91
Waist slab 2	1	x	1	1.20	3.60		4.32
Landing Slab 1	1	x	1	2.40	1.20		2.88
Landing Slab 2	1	x	1	1.20	1.20		1.44
Roof slab	1	x	1	17.16	7.24		124.24
Deduct for Panchayat secretary room offset	-1	x	1	1.32	1.4		-1.85

	Roof slab sides	1	x	1	50.64		0.125	6.33
	Portico	1	x	1	4.00	3.00		12.00
	sides	1	x	1	10.92		0.125	1.37
	Septic Tank bottiom	1	x	1	6.00	2.00		12.00
	Septic Tank Slab Sides	1	x	1	17.84		0.10	1.78
	D/f Manhole	-1	x	1	0.60	0.60		-0.36
	Total Quantity							223.35
8	Supplying ,fabricating and placing in position of mild steel or ribbed for steel rods and all RCC works as per the design given including cost of steel and binding wire in all floors etc., & conveyance of steel as per std. Specification etc.,complete complying with std. Specifications and as directed.							
	Footing	1	x	1	14.61	0.05	50kg/m3	0.73
	Column	1	x	1	9.12	0.275	275kg/m3	2.51
	Grade Beam, Lintel beam	1	x	1	13.92	0.15	150 kg/m3	2.09
	Roof slab, Lintel sunshade	1	x	1	21.84	0.08	80 kg/m3	1.75
	Roof Beam	1	x	1	6.44	0.175	175kg/m3	1.13
	As per Steel schedule	1	X	1	8.20			8.200
	Total Quantity							8.200
9	RCC 1:1 1/2:3 mix using 20 mm ISS HBG metal for RCC items of works excluding cost of reinforcement and fabricating charges and centering and shuttering charges but including curing providing fixtures like fan clamps in the RCC floor or roof level wherever necessary and bearing surfaces of walls, sides and bottom of slab, beams etc., complete							
	Below Ground Level :-							
	Footing F1	1	x	2	1.60	1.9	0.20	1.22
	Footing F2	1	x	2	1.30	1.3	0.20	0.68
	Footing F3	1	x	18	1.30	1.6	0.20	7.49
	Footing F1 Sloped Portion	1	x	2				0.67
	Footing F2 Sloped Portion	1	x	2				0.15
	Footing F3 Sloped Portion	1	x	18				4.40
	Coloumn Upto Grade beam	1	x	2	0.23	0.45	0.975	0.20
	Coloumn Upto Grade beam	1	x	2	0.23	0.23	0.975	0.10
	Coloumn Upto Grade beam	1	x	18	0.23	0.38	0.975	1.51
	Septic Tank bottiom	1	x	1	1.50	2.00	0.100	0.30
	D/f Manhole	-1	x	1	0.60	0.60	0.100	-0.04
								16.68
	Above Ground Level :-							
	Grade beam- alround	1	x	1	52.35	0.23	0.375	4.52
	Grade beam - A3 -B3, A4-B4	1	x	2	3.66	0.23	0.375	0.63
	Grade beam B1- B6	1	x	1	17.16	0.23	0.375	1.48
	Grade beam B3 - E3, B4- E4	1	x	2	3.35	0.23	0.375	0.58
	Grade Beam A7-C7	1	x	1	4.69	0.23	0.375	0.40
	Grade Beam E3-F3 & E4- F4	1	x	2	3.00	0.23	0.375	0.52
	Grade beam F3-F4	1	x	1	4.23	0.23	0.375	0.36
	Grade beam staircase front portion C7	1	x	1	2.52	0.23	0.375	0.22
	Column (G.L to Parapet wall ht)							
	Coloumn C1	1	x	2	0.23	0.45	3.920	0.81

	Coloumn C2	1	x	2	0.23	0.23	3.920	0.41
	Coloumn C3	1	x	18	0.23	0.375	3.920	6.09
	Sunshade, loft and sill concrete							
	Sunshade W2	1	x	3	1.66	0.6	0.075	0.22
	Portico sunshade	1	x	1	5.6€	0.6	0.075	0.25
		1	x	2	3.23	0.6	0.075	0.29
	Sill Slab	1	x	8	1.66	0.23	0.075	0.23
	Loft	1	x	2	3.35	0.45	0.050	0.15
	Loft in store	1	x	1	6.20	0.45	0.050	0.14
	Loft in president room	1	x	1	4.00	0.45	0.050	0.09
	Lintel beam :-							
	Lintel- alround	1	x	1	52.35	0.23	0.230	2.77
	Lintel - A3 -B3, A4-B4	1	x	2	3.66	0.23	0.230	0.39
	Lintel B1- B6	1	x	1	17.16	0.23	0.230	0.91
	Lintel B3 - E3, B4- E4	1	x	2	3.35	0.23	0.230	0.35
	Lintel A7-C7	1	x	1	4.69	0.23	0.230	0.25
	Lintel E3-F3 & E4- F4	1	x	2	3.00	0.23	0.230	0.32
	Lintel F3-F4	1	x	1	4.23	0.23	0.230	0.22
	Roof beam and slab:-							
	Roof Beam- alround	1	x	1	52.35	0.23	0.250	3.01
	Extra depth- store and Vao room roof beam	1	x	3	6.20	0.23	0.075	0.32
	Extra depth -Meeting hall roof beam	1	x	2	6.50	0.23	0.080	0.24
	Roof Beam A3 -B3, A4-B4	1	x	2	3.66	0.23	0.250	0.42
	Roof Beam B1- B6	1	x	1	17.16	0.23	0.250	0.99
	Roof Beam B3 - E3, B4- E4	1	x	2	3.35	0.23	0.250	0.39
	Roof Beam A7-C7	1	x	1	4.69	0.23	0.250	0.27
	Roof Beam E3-F3 & E4- F4	1	x	2	3.00	0.23	0.250	0.35
	Roof Beam F3-F4	1	x	1	4.23	0.23	0.250	0.24
	Landing beam	1	x	1	2.40	0.23	0.375	0.21
	Landing Slab1	1	x	1	2.40	1.2	0.125	0.36
	Waist slab 1	1	x	1	1.09	3.60	0.175	0.68
	Waist slab 2	1	x	1	1.20	3.60	0.175	0.76
	Roof slab	1	x	1	17.62	7.7	0.125	16.96
	Deduct for Panchayat secretary room offset	-1	x	1	1.32	1.4	0.125	-0.23
	Landing Slab 2	1	x	1	1.20	1.2	0.125	0.18
	Portico	1	x	1	4.00	3.00	0.125	1.50
	Total Quantity							49.25
11	Weathering course concrete using 20mm broken brick jelly in pure slacked lime							
	Roof slab	1	x	1	17.16	7.24	0.075	9.32
	Portico	1	x	1	4.00	2.77	0.075	0.83
	Deduct for Panchayat secretary room offset	-1	x	1	1.32	1.4	0.075	-0.14
	Total Quantity							10.01
12	Finishing the top of roof with one course of Machine pressed tiles of size 23x23x2cm in 1:3 12mm thick using WCC							

	Roof slab	1	x	1	17.16	7.24		124.24
	Portico	1	x	1	4.00	2.77		11.08
	Sloping around tiles	1	x	1	48.80		0.230	11.22
	Deduct for Panchayat secretary room offset	-1	x	1	1.32	1.4		-1.85
		-1	x	1	5.44		0.230	-1.25
	Total Quantity							143.44
13	Plastering with cement mortar 1:3 mix to 10mm thick including curing, cost and conveyance of all materials & all labour charges etc., complete.							
	Ceiling							
	President room	1	x	1	4.00	3.66		14.64
	Meeting hall	1	x	1	6.50	3.66		23.79
	Vao room	1	x	1	3.35	3.35		11.22
	Waiting room	1	x	1	6.57	3.35		22.01
	Record room	1	x	1	1.40	1.80		2.52
	Portico	1	x	1	4.46	3.00		13.38
	Sunshade W2	1	x	3	1.66	0.6		2.99
	Sides	1	x	3	3.92		0.06	0.74
	Portico	1	x	1	5.66	0.6		3.40
		1	x	2	3.23	0.6		3.88
	Sides	1	x	1	12.12		0.06	0.73
	Sill Slab Sides	8	x	2	1.66		0.075	1.99
	Loft	1	x	2	3.35	0.45		3.02
	Sides	1	x	2	3.35		0.05	0.34
	Loft in store	1	x	1	6.20	0.45		2.79
	Sides	1	x	1	6.20		0.05	0.31
	Loft in president room	1	x	1	4.00	0.45		1.80
	Sides	1	x	1	4.00		0.05	0.20
	Panchayat secretary room	1	x	1	13.40		3.05	40.87
	Waist slab 1	1	x	1	1.09	3.60		3.91
	Waist slab 2	1	x	1	1.20	3.60		4.32
								158.82
	Total Quantity							158.82
14	Plastering with cement mortar 1:5 mix to 12mm thick including curing, cost and conveyance of all materials & all labour charges etc., complete.							
	Inner :-							
	Store	1	x	1	19.72		3.65	71.98
	Shelf wall	2	x	2	0.45		2.10	3.78
	President room	1	x	1	15.32		3.65	55.92
	Toilet inner 2 sides	1	x	1	2.20		3.05	6.71
	Toilet-outer 2 sides	1	x	1	2.32		3.05	7.06
	Meeting hall	1	x	1	20.32		3.65	74.17
	Shelf wall	3	x	2	0.45		2.10	5.67
	Vao room	1	x	1	13.40		3.65	48.91
	Record room	1	x	1	6.40		3.65	23.36
	Toilet	1	x	1	7.27		3.65	26.54

Waiting hall	1	x	1	19.84		3.65	72.42
Panchayat secretary room	1	x	1	13.40		3.65	48.91
Record room	1	x	1	6.40		3.65	23.36
Toilet beneath s/c	1	x	1	4.57		2.10	9.60
Toilet beneath s/c	1	x	1	4.34		2.10	9.11
D/F Door D	-2	x	3	0.90		2.10	-11.34
D/F Door D1	-2	x	5	0.75		1.80	-13.50
D/F Door D2	-2	x	1	1.10		2.10	-4.62
D/F Window W1	-2	X	2	0.90		1.30	-4.68
D/F Window W2	-2	X	6	1.20		1.30	-18.72
D/F Rolling shutter	-2	x	1	1.80		2.10	-7.56
D/F Collapsing gate	-2	x	1	1.50		2.10	-6.30
D/F Ventilator V	-2	x	4	0.60		0.45	-2.16
D/F Ventilator V1	-2	x	2	0.90		0.60	-2.16
Add for soffits							
Door D	1	x	3	5.10	0.23		3.52
Door D1	1	x	5	2.73	0.23		3.14
Door D2	1	x	1	5.30	0.23		1.22
Window W1	1	X	2	4.40	0.23		2.02
Window W2	1	X	6	5.00	0.23		6.90
Rolling shutter	1	x	1	6.00	0.23		1.38
Collapsing gate	1	x	1	5.70	0.23		1.31
Ventilator V	1	x	4	2.10	0.23		1.93
Ventilator V1	1	x	2	3.00	0.23		1.38
							439.26
Outer :-							
Outer All round	1	x	1	50.76		3.78	191.60
Parapet wall	1	x	1	50.76		0.75	38.07
Parapet wall - inner	1	x	1	49.84		0.75	37.38
Parapet wall	1	x	1	50.30	0.23		11.57
Portico parapet wall-outer	1	x	1	10.92		0.30	3.28
Portico parapet wall-inner	1	x	1	10.00		0.30	3.00
Portico parapet wall top	1	x	1	10.23	0.23		2.35
Steps- portico	1	x	3	4.46	0.30		4.01
	1	x	3	4.46		0.15	2.01
Sides	1	x	2	0.90		0.15	0.27
	1	x	2	0.60		0.15	0.18
	1	x	2	0.30		0.15	0.09
Steps-store	1	x	3	4.12	0.30		3.71
	1	x	3	4.12		0.15	1.85
Sides	1	x	2	0.90		0.15	0.27
	1	x	2	0.60		0.15	0.18
	1	x	2	0.30		0.15	0.09
Steps-rear toilet	1	x	1	2.75	0.30		0.82

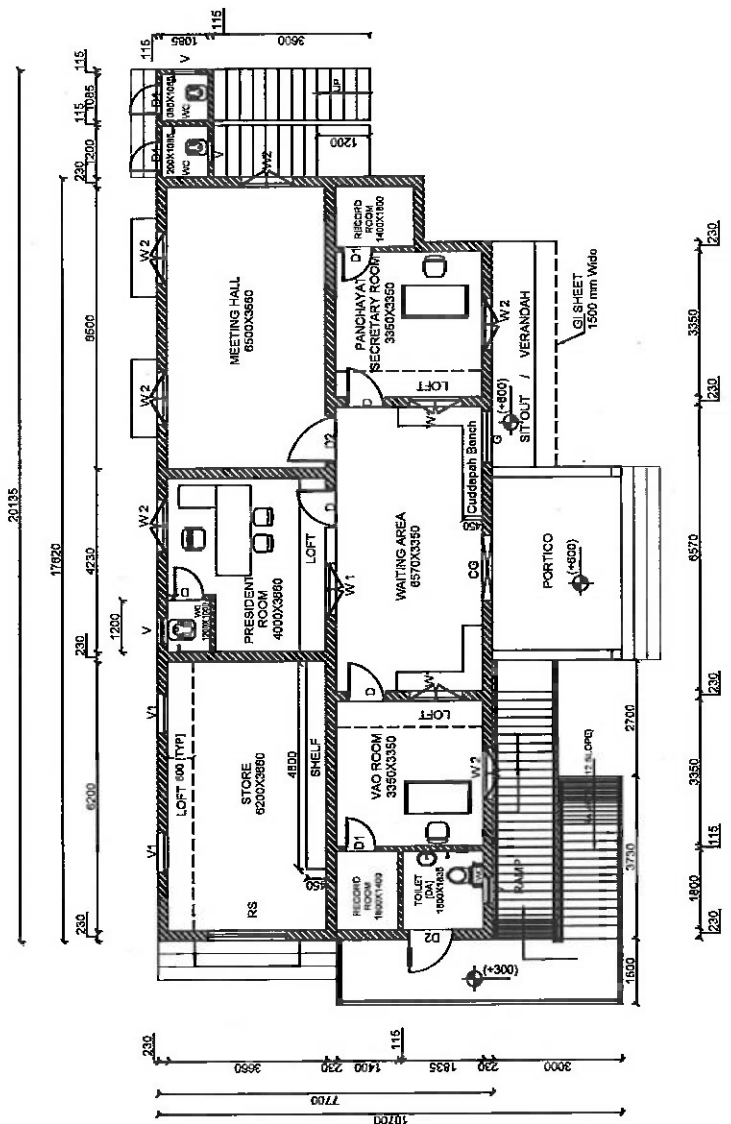
		1	x	1	2.75		0.15	0.41
		1	x	2	0.30		0.15	0.09
	Sitout and verandah wall	1	x	1	6.75		0.60	4.05
	Portico basement 2 sides	1	x	2	3.23		0.60	3.88
	Ramp wall	2	x	1	11.81		0.30	7.09
								316.26
	Total Quantity							767.76
15	Paving the floor with kota stone slab of size 600 x 600 of 18 / 20mm (un-polished) antiskid in all floors laid in of cement mortar 1:3 (one cement three sand), 20mm thick and pointed with colour cement neatly including polishing with polishing stone and oxalic acid etc., so as to perfectly smooth and glossy and including hire charges for polishing machine and power consumption charges etc. The kota stone slabs and other materials to be used shall be not							
	President room	1	x	1	4.00	3.66		14.64
	Meeting hall	1	x	1	6.50	3.66		23.79
	Vao room	1	x	1	3.35	3.35		11.22
	Waiting room	1	x	1	6.57	3.35		22.01
	Record room	1	x	1	1.40	1.80		2.52
	Portico	1	x	1	4.46	3.00		13.38
	Total Quantity							87.56
16	Providing granolithic floor finish in cement concrete 1:2:4 mix using 10-12mm ISS metal to 25mm thick (Using M-Sand) including cost and conveyance of all materials to site and all labour charges for mixing, laying, curing etc complete for 10 cum							
	Store	1	x	1	6.20	3.66		22.69
	Ramp longer side	1	x	1	7.93	1.50		11.90
	Ramp shorter side	1	x	1	5.23	1.50		7.85
	Side Platform upto record room of Vao offic	1	x	1	3.58	1.50		5.37
	Sitout cum verandah	1	x	1	6.50	1.05		6.83
	Total Quantity							54.63
17	Paving the flooring with special type of flooring tiles (Cement based Hydraulically pressed Anti skid tiles (20mm thick) in CM 1:3, 20mm thick							
	Toilet	1	x	1	1.80	1.84		3.30
	Toilet 1 - PS room	1	x	1	1.20	1.00		1.20
	Toilet beneath s/c	1	x	1	1.20	1.09		1.30
		1	x	1	1.09	1.09		1.18
	D/d For IWC	-1	x	3	0.40	0.30		-0.36
	D/d For EWC	-1	x	1	0.20	0.20		-0.04
	Total Quantity							6.58
18	Dadoing of walls with glazed tiles of size 15 cm x15cmx6mm laid in CM 1:2, 10mm thick & pointing with white cement using 0.4kg/cm2 -10Sqm							
	Toilet	1	x	1	7.27		1.20	8.72
	Toilet 1 - PS room	1	x	1	4.40		1.20	5.28
	Toilet beneath s/c	1	x	1	4.57		1.20	5.48
		1	x	1	4.34		1.20	5.21
	D/f Door	-1	x	1	1.10		1.20	-1.32
	D/f Door	-1	x	3	0.75		1.20	-2.70
	Add for jambs	2	x	4	0.12		1.20	1.10

	Total Quantity							21.78
19	Supply and fixing of door and windows INCLUDING ALL LABOUR CHARGES etc							
	Door D	1	x	3	0.90		2.10	5.67
	Door D1	1	x	5	0.75		1.80	6.75
	Door D2	1	x	1	1.10		2.10	2.31
	Window W1	1	x	3	0.90		1.30	3.51
	Window W2	1	x	6	1.20		1.30	9.36
	Rolling shutter	1	x	1	1.80		2.10	3.78
	Collapsible gate	1	x	1	1.50		2.10	3.15
	Ventilator V	1	x	4	0.60		0.45	1.08
	Ventilator V1	1	x	2	0.90		0.60	1.08
20	Emulsion painting two coats with best approved quality and colour paint over one coat of Base coat including cost and conveyance of all materials to work site and labour charges etc., complete.							
	Outer plastering qty							316.26
	Total Quantity							316.26
21	Emulsion painting two coats with best approved quality and colour paint over one coat of Base coat including cost and conveyance of all materials to work site and labour charges etc., complete.							
	Inner plastering qty-Basement Inner Plastering Qty							374.06
	PLs cm 1:3 10 mm thick qty							158.82
	Total Quantity							532.88
22	Painting two coats over New iron works using ready mixed enamel paint including cost and conveyance of paint and all labour charges etc complete							
	Door	2.2	x	3	0.90		2.10	12.47
	Door 1	2.2	x	5	0.75		1.80	14.85
	Door 2	2.2	x	1	1.10		2.10	5.08
	W1	3.2	x	3	0.90		1.30	11.23
	W 2	3.2	x	6	1.20		1.30	29.95
	Grill	3.2	x	1	1.20		1.30	4.99
	Ventilator V	3.2	x	4	0.60		0.45	1.08
	Ventilator V1	3.2	x	2	0.90		0.60	1.08
	Rolling shutter	3.2	x	1	1.80		2.10	3.78
	CG	3.2	x	1	1.50		2.10	10.08
	Total Quantity							94.60
23	Supplying and fixing in Position European type water Closet of best quality and approved make with 100mm " p" or "s" trap with double flapped rigit P.V.C Seat level flusing etc							
	Toilet	1	x	1				1.00
	Total Quantity							1.00
24	Supplying and fixing in Position Ordinary colour glazed indian type water closet quality and approved make with 100mm " p" or "s" trap with double flapped rigit P.V.C Seat level flusing etc							
	Toilet	1	x	3				3.00
	Total Quantity							3.00
25	Supply and Fixing of CI manhole with cover and frame for septic tank manhole in position							

	CI manhole	1	x	1	0.60	0.60		1.00
	Total Quantity							1.00
26	Supplying and fixing P.V.C rain water down fall pipe 110mm dia with necessary shoes, bends & clamps etc							
	rain water down fall pipe	1	x	4	3.50			14.00
	Total Quantity							14.00
27	Supply and Fixing of Cuddapah slab of 20mm thick for Shelf arrangements including cost and conveyance of all materials to site and all labour charges etc complete							
	Waiting area	1	x	2	4.00	0.60		4.80
	Store Shelf	3	x	1	4.80	0.45		6.48
	Total Quantity							11.28
28	Plastering with cement mortar 1:5 mix to 12mm thick including curing, cost and conveyance of all materials & all labour charges etc., complete.							
	Septic tank Inside	1	x	1	7.00		1.80	12.60
	D/f Manhole	-1	x	1	0.60	0.60		-0.36
	Total Quantity							12.24
29	Provision for Name Board							LS
30	Provision for Photography charges							LS
31	Rain water harvesting Structure							LS
32	Provisions for GST @ 12%							LS
33	Provisions for Labour Welfare fund @ 1%							LS
34	Contingencies & other unforeseen charges							LS

op-1

VILLAGE SECRETARIAT



PLAN

IMPORTANT NOTES:-

- ECONOMICAL FOUNDATION MAY BE ADOPTED. DEPTH OF FOUNDATION SHOULD BE BASED ON THE SBC OF SOIL AVAILABLE AT SITE.
- FLOOR FINISH WITH VITRIFIED TILES
- SILL SLAB (75mm THICK) SHOULD BE PROVIDED AT THE EXTENSION EITHER SIDE OF WINDOW OPENINGS WITH 280mm PLINTH PROTECTION PLATFORM OF 750mm SHOULD BE PROVIDED ALL AROUND THE BUILDING.
- SLIGHT SLOPE SHOULD BE GIVEN FOR ROOF SLAB.
- WEATHERING COURSE SHOULD BE PROVIDED WITH REQUIRED SLOPE TO DRAIN RAIN WATER.
- RWH STRUCTURE SHOULD BE CONSTRUCTED AWAY FROM SEPTIC TANK (IF ANY) AND IT CAN BE LINKED TO A NEAR BY WATER SOURCE.
- 110mm OF PVC PIPES MAY BE USED FOR RAIN WATER DOWNFALL PIPES.
- CONTINUOUS LINTEL SHOULD BE PROVIDED.
- TOILET FIXINGS SHOULD BE DONE USING ANTI SKID TILES FOR SAFETY.
- HANDRAILS SHOULD BE PROVIDED INSIDE THE TOILET AND AT THE RAMP PORTION FOR DIFFERENTLY ABLED PERSONS.
- SURFACE OF THE RAMP SHOULD BE GROOVED.
- DOOR (FOR DA TOILET) SHOULD BE PROVIDED WITH HANDRAIL.
- HARMONIZED GUIDELINES AND SPACE STANDARDS FOR PERSON WITH DISABILITIES (FEB-2016) SHOULD BE REFERRED FOR POSITIONING OF SANITARY FIXTURES TO DISABLED TOILET
- THE SIZE OF FOOTINGS , COLUMN , BEAMS AND SLAB SHOULD BE DECIDED UPON THE STRUCTURAL DESIGN OF THE BUILDING.
- ALL DIMENSIONS ARE IN mm.

SCHEDULE OF JOINERY

SL. NO	SL. TYPE	SIZE		SILL TOP	DESCRIPTION	REMARKS	
		WIDTH	HEIGHT				
1	D	900	2100	-	STEEL DOOR WITH 18GMS SHEET SHUTTER	SINGLE LEAF	
2	D1	750	1800	-	STEEL DOOR WITH 16GMS SHEET SHUTTER	SINGLE LEAF	
3	D2	1100	2100	-	STEEL DOOR WITH 16GMS SHEET SHUTTER WITH HANDRAIL	SINGLE LEAF	
4	W1	800	1300	800	STEEL WINDOWS WITH 18GMS SHEET SHUTTER AND 12mm Sq.m BARS	TWO LEAVES	
5	W2	1200	1300	800	STEEL WINDOWS WITH 18GMS SHEET SHUTTER AND 12mm Sq.m BARS	TWO LEAVES	
6	V1	900	800	1500	VENTILATOR	-	
7	V	600	450	1650	VENTILATOR	-	
8	CG	1500	2100	2100	ROLLING SHUTTER	-	
9	G	1500	1300	800	2100	GRILL	-

AREA : 133.39 sq.m / 1445.16 sq.ft
 STAIRCASE : 12.36 sq.m / 133.00 sq.ft
 TOTAL AREA : 145.75 sq.m / 1578.16 sq.ft (Excluding - Portico)

TITLE : VILLAGE SECRETARIAT OPTION - 1
 DIRECTORATE OF RURAL DEVELOPMENT AND PANCHAYAT RAJ

DATE	AE	EE	SE	CE	SH. No. 1 OF 1	REVISION : 0

DRAWING NO:

CONSTRUCTION OF VILLAGE SECRETARIAT - OPTION 2

Abstract Estimate

Rs. 39,957,000/-

SI No	Quantity	Description	Rate	Per	Amount
1	32.88	Earth work excavation for foundation in all soils and sub-soils and to full depth as may be directed except in rock requiring blasting inclusive of shoring shuttering, bailing out water wherever necessary and depositing the surplus earth within the compound in places shown by the departmental officers with an initial lead of 10 mts and initial lift of 2 mts. and clearing and levelling the site, etc., complete complying with standard specification.	268.19	Cu.m	8,817.00
1a	23.91		331.07	Cu.m	7,915.00
1b	92.50		343.85	Cu.m	31,808.00
2	6.73	Supplying and filling in foundation, basement, etc with filling sand in layers of not more than 15 cm thick well watered, rammed and consolidated etc. complete complying with standard specification and as directed by the departmental officers.	1683.30	Cu.m	11,330.00
3	51.98	Supply and filling the basement with conveyed excavated earth other than sand complying the standard specification	244.70	Cu.m	12,721.00
4	22.89	Cement Concrete 1:4:8 (One Cement, Four sand and Eight hard broken stone jelly) using 40 mm gauge hard broken granite stone jelly for foundation including dewatering wherever necessary and laid in layers of not more than 15 cm thick well rammed, consolidated and curing etc. complete complying with standard specification	4959.34	Cu.m	113,496.00
5		Brick work in Cement Mortar 1:5 using best quality of country bricks of size 8-3/4" x 4-1/4" x 2-1/4" for foundation and basement including curing, etc., complete complying with standard specification.			
a)	18.33	below basement	5696.65	Cu.m	104,440.00
b)	43.01	above basement	5771.45	Cu.m	248,203.00
c)	17.33	FF	5922.35	Cu.m	102,625.00
6		Supplying and erecting steel centering including necessary supports for plane surfaces for Reinforced Cement Concrete works such as column footings, column pedestals, plinth beams, grade beams, staircase steps, etc. which require only nominal strutting us			
a	123.83	below basement	455.50	Sq.m	56,406.00
b)	336.71	ground level to basement	911.00	Sq.m	306,747.00
7		Reinforced Cement Concrete 1:11/2:3(One Cement, One and a half sand and Three hard broken stone jelly) using 20 mm gauge hard broken granite stone jelly for all RCC items of works excluding cost of reinforcement grill and fabricating charges centering and shuttering but including laying, vibrating with mechanical vibrators, finishing, curing, etc. and providing fixtures like fan clamps in the RCC floor / roof slabs wherever necessary and bearing surfaces of walls, beams etc. shall be finished smooth with Cement Mortar 1:3 (One Cement and Three Sand) etc., complete complying with standard specification and as directed by the departmental officers			
a	25.25	below basement	8423.50	Cu.m	212,698.00
b)	31.87	basement To ground floor	8537.10	Cu.m	272,105.00
c)	8.17	First floor	8760.90	Cu.m	71,597.00

8	8.04	Supplying, fabricating and placing in position Mild Steel / Ribbed Tor Steel grills for all RCC works as per design given including cost of steel and G.I. binding wire in all floors etc. complete complying with standard specification. (Contractor has to make his own arrangements for the supply of steel and binding wire)	87400.75	mt	702,702.00
9	6.95	Weathering course in brick jelly lime concrete using broken brick jelly of size 20mm uniform gauge in pure slaked lime (no sand to be used) to the proportion of brick jelly to lime being 32:12.5 by volume and laid over the RCC roof slab in a single layer of required slope and finished by beating the concrete with wooden beaters of approved pattern, keeping the surface constantly wet by sprinkling lime jaggery water, etc., complete as per standard specification and as directed by the departmental officers.	3741.47	Cu.m	26,018.00
10	108.04	Finishing the top of the roof with one course of Machine Pressed Tiles of size 23 cm x 23x2 cm of approved quality laid in CEMENT MORTAR 1:3(One cement and three sand) 12 mm thick mixed with water proofing compound conforming to ISS by 2% weight of cement used and the joint pointed neatly to full depth of tiles with the same water proofing compound mixed with cement mortar, red oxide, etc., complete complying with standard specification	1151.26	Sq.m	124,384.00
11	3.78	Supplying and fabrication of the following rolling Shutters including cost and conveyance and all charges etc complete.	2171.00	Sq.m	8,206.00
12	101.66	Paving the floor with kota stone slab of size 600 x 600 of 18 / 20mm (un-polished) antiskid in all floors laid in of cement mortar 1:3 (one cement three sand), 20mm thick and pointed with colour cement neatly including polishing with polishing stone and oxalic acid etc., so as to perfectly smooth and glossy and including hire charges for polishing machine and power consumption charges etc. The kota stone slabs and other materials to be used shall be got approved by the Executive Engineer concerned before use on work, etc., complete as per standard specification.	1416.07	Sq.m	143,960.00
13	20.83	Providing granolithic floor finish in cement concrete 1:2:4 mix using 10-12mm ISS metal to 25mm thick including cost and conveyance of all materials to site and all labour charges for mixing, laying, curing etc complete for 10 cum	152.97	Sq.m	3,187.00
14	10.43	Paving the flooring with special type of flooring tiles (Cement based Hydraulically pressed Anti skid tiles (20mm thick) in CM 1:3, 20mm thick	1311.81	Sq.m	13,678.00
15	21.52	Dadoing walls with best approved quality, colour glazed tiles of 150mm x 150mm x 6mm size set in Cement Mortar 1:2 (One Cement and Two sand) 10mm thick and pointing the joints with white cement mixed with colouring pigments at the rate of 0.40 Kg. / sq.m. neatly in all floors, curing, etc., complying with standard specification and as directed by the departmental officers.	1245.15	Sq.m	26,791.00
16	13.60	Supplying and fixing in position best approved of BIS quality PVC rain water down fall pipes of 110mm dia., having a pressure of 4 kg. / sq.cm including cost of necessary PVC shoe, PVC bend, cast iron gratings of required diameter and special clamps, brass screws, nails, etc., and fixing of cast iron gratings at junction of parapet and the RCC roof slab including finishing neatly etc., complete. The rate shall be inclusive of cast of removable cast iron grating. The PVC pipe shall be fixed in wall with special type of "U" clamp at the centre of the pipe line in addition to those for more than 3.0 metre pipe length, etc., complete complying with standard specification.	568.11	RM	7,726.00

17	39.00	Supplying and fixing of M.S.grill of approved design for grill gate, grill work to doors and windows openings etc., using necessary mild steel etc., complete complying with standard specification.	100.50	Kg	3,920.00
18	684.06	Plastering with Cement Mortar 1:5 (One cement and Five sand), 12mm thick in all floors including curing etc. complete complying with standard specification and as directed by the departmental officers.	240.26	Sq.m	164,351.00
19	117.85	Special ceiling plastering and finishing the exposed surface of all RCC items of work such as slabs, beams, sunshades, facia, canopy slab, staircase waist slab, landing slab etc., with Cement Mortar 1:3 (One Cement and Three Sand) 10mm thick including hacking the surfaces, providing cement mortar nosing, beading for sunshades, staircases, steps, landing slabs and curing, etc., in all floors complying with standard specification and as directed by the departmental officers	275.01	Sq.m	32,411.00
20		Painting two coats of newly plastered wall surface with ready mixed plastic emulsion paint of first class quality and of approved colour over a priming coat including thorough scrapping, clean removal of dirt, and including necessary plaster of Paris putty, wherever required etc., complete complying with standard specification.			
	737.00	wall painting	222.66	Sq.m	164,099.00
21	99.89	Painting new iron works such as steel doors, windows, ventilators, window bars, balustrades etc., with two coats of best approved first quality and colour of synthetic enamel paint over the existing red oxide priming coat in all floors excluding cost of priming coat etc., complete complying with standard specification. (The make, quality and colour of paint should be got approved by the Executive Engineer before use on works.)	133.79	Sq.m	13,364.00
22	15.53	Manufacturing supplying and fixing of steel door with the following specification MS angels of size 40x40x6mm are used for the outer frames and M.S. angles of size 35x35x6mm for the shutter frames stiffeners with 32 x 6mm M.S flat is provided at required intervals in the shutter frame. 18-gauge C.R. sheet laid as panel in the shutter and welded intact. M.S. flat 18x5mm is welded over the 32 x 6mm M.S. flat sandwiching the C.R. sheet in between additional stiffeners with 18x5mm M.S. flat is provided diagonally at the rear side of the shutter, 3nos. of hinges in case of single leaf and 6nos. of hinges in double leaves shutter to be provided 6nos. of holdfasts 120 mm in length made of angle section spliced at the ends are welded to the outer frames of the door. Tower bolts 2nos. one at the top and the other at the bottom are provided 1no. Aldrop is provided incase of double leaf door at lock rail section in the door in single leaf door, one more aldrop is provided in the inner lock rail section of the door One rotaing locking arrangements for the inner side of the door and additional provision for locking arrangements for lock is provided on the rear side of the door at an appropriate place. Incase of double leaf door M.S.Flat 32 x 3mm at 1.1Kg/m is provided on the one shutter t conceal the gap between the two shutters.at an appropriate place in the door. A tie bar is provided at the bottom of the frame to prevent twisting of frame during transportation and fixing. All members are given a coat of red oxide primer as directed by the departmental officers. The rate includes cost of all materials, labour charges, transportation to site of work, loading, un loading and all other incidental charges etc.,	4265.10	Sq.m	66,216.00

23	13.26	Fabricating, Supplying and fixing in position of steel sheeted windows (Two Leaves) with the following specifications. Outer frames of windows made of 'Z' section F7D of size 33 x 25 x 3mm at 1.419 kg/ m and mullion 'J' section (F4B) of size 46x25x3mm at 2.28kg/m and shutter section of made of F7D of 33x25x3mm at 1.419 kg/m as specified in IS 7452/1990. Each openable shutter should not exceed a width of 600mm to enable separate operations and easy maintenance. The panel of the shutters to be covered with 18 gauge cold rolled sheet of superior quality and welded intact with shutter frames. Horizontal stiffeners using 18x5mm MS Flat at 0.70kg/m at 3 Nos. for each shutter and additional diagonal stiffeners of the same MS flats at all the four corners of each shutters to the suitable length welded to the shutters, for holding the CR Sheets in position firmly. 2 numbers of sturdy hinges and one number of handle-cum-latch of special type made with 18x5mm MS flats are revetted to the shutters at an appropriate height in window. suitable opening is left for its easy operation. a stopper square rod for handle is provided in the mullion section at suitable place to catch the window handle. each window shutter having an adjustable stay made out of 18 x 5mm at 0.70 kg/ m MS flat of length 320mm with three adjustable position. A matching peg is provided in the outer frame of the window at suitable place. 4 Nos. of hold fasts of 120mm length spliced at the ends are welded to the outer frame of the window by using MS flat of 18x5mm at 0.70kg/m, welded to the shutter at two place equivalent from each from top and bottom of the shutter.	4156.95	Sq.m	55,121.00
24	0.59	Supply and fixing of Steel Window of size 0.45mx1.3 m including all charges etc.	4156.95	Sq.m	2,432.00
25	2.16	Fabrication, supply and fixing in position of 'N' type ventilators using M.S. angle of size 25 x 25 x5 mm for frame and M.S. Flat of size 20 x 3 mm for fixing the weld mesh and using 25 x 22 x3 mm 'T' section for frame glass. Special type of Hold fast welded to the frame of 45 degree inclined towards centre for wall and fixing the weldmesh 25mm square including cost of 3mm thick pinheaded glass panes for all panels and fixing the glass panels with necessary clips & putties with required bolts, nuts and washers and one coat of red oxide primer etc. including necessary dismantling, making holes in RCC columns, beams, masonry wherever necessary with power drill to the extend required and made good to the original conditions after fixing as directed by the departmental officers.	2333.10	Sq.m	5,039.00
26	3.15	Supply and Fixing of Collapsible gate including all labour charges	2429.89	Sq.m	7,654.00
27	2.00	Provision for European water closet	5073	Nos	10,146.00
28	2.00	Provision for Indian Type closet	5002.89	Nos	10,006.00
29	1.00	Provision for wash basin	3687.79	Nos	3,688.00
30	2.00	Provision for pvc nahini trap	570.82	Nos	1,142.00
31	4.00	Provision for pillar tap	352.65	Nos	1,411.00
32	2.00	Provision for angle Cock	922.65	Nos	1,845.00

33	2.00	Provision for angle cock two way	2060.00	Nos	4,120.00
34	1.00	Provision for Grab bar for diabled person in toilet	750.00	LS	750.00
35		Provision water supply, sanitary arrangements pipe line,UPVC specials etc		LS	10,000.00
36	500.00	Provision for PVC tank	10.05	Litre	5,025.00
37		Provision for Electrification arrangements			
	25.00	Light Point/Fan Point SD25	2074.60	Nos	51,865.00
	6.00	Bulk Head fitting with 40w BULB SD 81	309.10	Nos	1,855.00
	15.00	SD88 4ft 40W tube	691.90	Nos	10,379.00
	1.00	SD127 TN meter board	2059.20	Nos	2,059.00
	10.00	SD12 concealed plug point	2194.50	Nos	21,945.00
	7.00	SD107 Ceiling fan 1200mm	2344.10	Nos	16,409.00
	4.00	SD 114 300mm exhaust fan	2362.80	Nos	9,451.00
	1.00	PWD EARTHING	2383.70	Nos	2,384.00
	1.00	SERVICE CONNECTON	3500.00	EACH	3,500.00
	3.00	Service pipe	125.00	m	375.00
	15.00	SD65 2x 4sqmm	138.60	m	2,079.00
	15.00	SD66 2x 6 sqmm	178.20	m	2,673.00
38	5.37	Provision for Galvinised color sheet -Verandah /Sitout	651.00	Sqm	3,496.00
39	45.19	Provision for closed wooden Shelf/Rack arrangement with locker using Commercial BWP/BWR plywood of 19mm thick with 0.5mm laminate sheet on bothsides including accessories like hinges ,door handle etc	900.00	Sqft	40,673.00
40	8.82	Provision for Shelf Arrangemet in Store,record room using Cuddapah slab	1177.40	Sqm	10,385.00
42		Provision for RWH Struture		LS	9000.00
42a	6.00	Provision for TactileFlooring For Disabled person	2040.00	Sqm	12,240.00
43		Sub total			3381068
44		Provision for Name Board			4500
45		Provision for GST @18%			608592
46		Provision for Photographic charges		LS	500.00
47		Contingencies		LS	340.00
		GRAND TOTAL			3995000

ESTIMATE FOR THE CONSTRUCTION OF VILLAGE SECRETARIAT OPTION 2							
Detailed Estimate							
SI No	Description	No	L	B	D	Quantity	
1	Earth work excavation for foundation in all soils and sub-soils and to full depth as may be directed except in rock requiring blasting inclusive of shoring shuttering, bailing out water wherever necessary and depositing the surplus earth within the compound in places shown by the departmental officers with an initial lead of 10 mts and initial lift of 2 mts. and clearing and levelling the site, etc., complete complying with standard specification.						
	Footing	1 x 19	1.80	1.80	0.30	18.468	
	Grade beam wall alround	1 x 1	41.52	0.45	0.30	5.605	
	Grade beam cross wall-Vertical	1 x 3	6.72	0.45	0.30	2.722	
	Grade beam cross wall -horizontal	1 x 1	12.20	0.45	0.30	1.646	
	Panch sec record room/toilet	1 x 1	4.55	0.30	0.30	0.410	
	VAO record room/toilet	1 x 1	4.75	0.30	0.30	0.428	
	STAIRCASE-3 Sides	1 x 1	9.83	0.45	0.30	1.327	
	d/f of column	-1 x 19	2.00	0.45	0.30	-5.130	
	Portico-Platform	1 x 1	9.35	0.45	0.30	1.262	
	Ramp-outer	1 x 1	15.51	0.45	0.30	2.094	
	Ramp inner	1 x 1	5.27	0.45	0.30	0.711	
	Front Steps	1 x 1	4.01	1.00	0.15	0.602	
	Store Steps	1 x 1	4.02	1.00	0.15	0.603	
	Rear toilet steps	1 x 1	2.70	1.00	0.15	0.405	
	Septic tank	1 x 1	2.66	2.16	0.30	1.724	
	Total					32.875	
1a	Earth work excavation for foundation in all soils and sub-soils and to full depth as may be directed except in rock requiring blasting inclusive of shoring shuttering, bailing out water wherever necessary and depositing the surplus earth within the compound in places shown by the departmental officers with an initial lead of 10 mts and initial lift of 2 mts. and clearing and levelling the site, etc., complete complying with standard specification.						
	Footing	1 x 19	1.80	1.80	0.30	18.468	
	Grade beam wall alround	1 x 1	41.52	0.45	0.15	2.803	
	Grade beam cross wall-Vertical	1 x 3	6.72	0.45	0.15	1.361	
	Grade beam cross wall -horizontal	1 x 1	12.20	0.45	0.15	0.823	
	STAIRCASE-3 Sides	1 x 1	9.83	0.45	0.15	0.664	
	d/f of column	-1 x 19	2.00	0.45	0.15	-2.565	
	Septick tank	1 x 1	2.66	2.16	0.30	1.724	
	Portico-Platform	1 x 1	9.35	0.45	0.15	0.631	
	Total					23.908	
1b	Earth work excavation for foundation in all soils and sub-soils and to full depth as may be directed except in rock requiring blasting inclusive of shoring shuttering, bailing out water wherever necessary and depositing the surplus earth within the compound in places shown by the departmental officers with an initial lead of 10 mts and initial lift of 2 mts. and clearing and levelling the site, etc., complete complying with standard specification.						
	Footing	1 x 19	1.80	1.80	1.40	86.184	
	Septic tank	1 x 1	2.66	2.16	1.10	6.320	
	Total					92.504	
2	Supplying and filling in foundation, basement, etc with filling sand in layers of not more than 15 cm thick well watered, rammed and consolidated etc. complete complying with standard specification and as directed by the departmental officers.						
	Footing	1 x 19	1.80	1.80	0.10	6.156	

	Septic tank	1	x	1	2.66	2.16	0.10	0.575
	Total							6.731
3	Supply and filling the basement with conveyed excavated earth other than sand complying the standard specification							
	For Basement							
	Store	1	x	1	6.200	3.36	0.50	10.416
	President room	1	x	1	4.665	3.35	0.50	7.814
	Panchayat Secretary room	1	x	1	4.665	3.35	0.50	7.814
	Waiting area	1	x	1	8.765	2.05	0.50	8.962
	Vao Room	1	x	1	5.265	3.35	0.50	8.819
	Portico-Platform	1	x	1	3.350	2.77	0.50	4.640
	Sitout	1	x	1	3.580	0.77	0.50	1.378
	Ramp	1	x	1	6.81	1.27	0.15	1.297
	Ramp	1	x	1	3.60	1.27	0.08	0.343
	Ramp	1	x	1	5.27	1.27	0.08	0.501
	Total							51.985
4	Cement Concrete 1:4:8 (One Cement, Four sand and Eight hard broken stone jelly) using 40 mm gauge hard broken granite stone jelly for foundation including dewatering wherever necessary and laid in layers of not more than 15 cm thick well rammed, consolidated and curing etc. complete complying with standard specification							
	Footing	1	x	19	1.80	1.80	0.10	6.156
	Grade beam wall around	1	x	1	41.52	0.45	0.10	1.868
	Grade beam cross wall-Vertical	1	x	3	6.72	0.45	0.10	0.907
	Grade beam cross wall -horizontal	1	x	1	12.20	0.45	0.10	0.549
	STAIRCASE-3 Sides	1	x	1	9.83	0.45	0.10	0.442
	d/f of column	-1	x	19	2.00	0.45	0.10	-1.710
	Portico-Platform	1	x	1	9.35	0.45	0.10	0.421
	Ramp	1	x	1	15.51	0.45	0.10	0.698
	Ramp	1	x	1	5.27	0.45	0.10	0.237
	Front Steps	1	x	1	4.01	1.00	0.10	0.401
	Steps-Store	1	x	1	3.82	1.00	0.10	0.382
	Septic tank	1	x	1	2.66	2.16	0.10	0.575
	For Basement							
	Store	1	x	1	6.200	3.36	0.10	2.083
	President room	1	x	1	4.665	3.35	0.10	1.563
	Panchayat Secretary room	1	x	1	4.665	3.35	0.10	1.563
	Waiting area	1	x	1	8.765	2.05	0.10	1.792
	Vao Room	1	x	1	5.265	3.35	0.10	1.764
	Portico-Platform	1	x	1	3.350	2.77	0.10	0.928
	Ramp	1	x	1	6.810	1.27	0.10	0.865
	Ramp	1	x	1	3.600	1.27	0.10	0.457
	Ramp	1	x	1	5.265	1.27	0.10	0.669
	Sitout	1	x	1	3.580	0.77	0.10	0.276
	Total							22.885
5	Brick work in Cement Mortar 1:5 using best quality of country bricks of size 8-3/4" x 4-1/4" x 2-1/4" for foundation and basement including curing, etc., complete complying with standard specification.							
a	Upto Basement							
	wall around	1	x	1	41.52	0.23	0.60	5.730
	Cross wall-Vertical	1	x	2	6.94	0.23	0.60	1.915

	cross wall -horizontal	1	x	1	11.97	0.23	0.60	1.651
	d/f of column	-1	x	17	0.23	0.23	0.60	-0.540
	Portico-Platform	1	x	1	9.35	0.23	0.60	1.290
	Ramp-footing	1	x	2	3.60	0.34	0.20	0.490
	Ramp-footing	1	x	1	8.31	0.34	0.20	0.565
	Ramp-footing	1	x	1	5.27	0.34	0.20	0.358
	Ramp-Sloped portion	1	x	1	8.31	0.23	0.15	0.287
	Ramp-	1	x	1	5.27	0.23	0.30	0.363
	Ramp-	1	x	1	3.60	0.23	0.15	0.124
	Sit out	1	x	1	4.58	0.23	0.60	0.632
	Front Step1	1	x	1	3.81	0.90	0.15	0.514
	Front Step2	1	x	1	3.81	0.60	0.15	0.343
	Front Step3	1	x	1	3.81	0.30	0.15	0.171
	StoreStep1	1	x	1	3.82	0.90	0.15	0.516
	StoreStep2	1	x	1	3.82	0.60	0.15	0.344
	Store Step3	1	x	1	3.82	0.30	0.15	0.172
	toilet Step1	1	x	1	2.50	0.90	0.15	0.338
	toilet Step2	1	x	1	2.50	0.60	0.15	0.225
	toilet Step3	1	x	1	2.50	0.30	0.15	0.113
	Septic Tank	1	x	1	7.92	0.23	1.50	2.732
								18.334
b	Above Basement to G.F							
	wall around	1	x	1	41.52	0.23	2.57	24.542
	Cross wall-Vertical	1	x	2	5.92	0.23	2.57	6.996
	cross wall -horizontal	1	x	1	11.97	0.23	2.57	7.073
	d/f of column	-1	x	14	0.23	0.23	2.57	-1.903
	Portico	1	x	1	9.35	0.23	0.47	1.011
	Stairs 2 sides	1	x	1	4.80	0.23	2.57	2.837
	partition wall -Panch Sec.	1	x	1	4.55	0.115	2.57	1.345
	partition wall -Vao Room	1	x	1	4.75	0.115	2.57	1.404
	partition wall -Toilet	1	x	2	2.40	0.115	2.57	1.419
	partition wall -Toilet	1	x	2	1.09	0.115	2.57	0.641
	Ramp-handrails	1	x	1	6.81	0.115	0.90	0.705
	Ramp	1	x	1	5.11	0.115	0.90	0.529
	Stairs Handrail	1	x	2	10.60	0.115	0.90	2.194
	Stairs steps	24	x	0.5	1.20	0.300	0.15	0.648
	Ramp	1	x	1	5.27	0.115	0.90	0.545
	Deduction							
	CG	-1	x	1	1.50	0.23	2.10	-0.725
	Grill	-1	x	1	1.80	0.23	1.30	-0.538
	D1	-1	x	5	0.75	0.23	2.10	-1.811
	Door-D	-1	x	3	0.90	0.12	2.10	-0.652
	Door-D2	-1	x	1	1.10	0.12	1.80	-0.228
	Window-W3	-1	x	1	0.45	0.23	1.30	-0.135
	Window-W1	-1	x	2	0.90	0.23	1.30	-0.538
	Window-W2	-1	x	3	1.10	0.23	1.30	-0.987
	Ventilator V	-1	x	4	0.60	0.23	0.45	-0.248
	Ventilator V1	-1	x	2	0.90	0.23	0.60	-0.248
	Rolling Shutter	-1	x	1	1.80	0.23	2.10	-0.869

								43.005
	First Floor							
	Meeting Hall wall alround	1	x	1	20.04	0.23	2.57	11.846
	Deduction							
	Window W2	-1	x	4	1.20	0.23	1.30	-1.435
	Door-D	-1	x	1	0.90	0.23	2.10	-0.435
	Parapet Wall alround GF	1	x	1	41.52	0.23	0.75	7.162
	Deuct column	-1	x	11	0.23	0.23	0.75	-0.436
	Parapet Wall alround FF	1	x	1	9.09	0.23	0.30	0.627
	Total							17.328
6	Supplying and erecting steel centering including necessary supports for plane surfaces for Reinforced Cement Concrete works such as column footings, column pedestals, plinth beams, grade beams, staircase steps, etc. which require only nominal strutting using mild steel sheets of size 90cm x 60cm and 10 BG stiffened with welded mild steel angles of size 25mm x 25mm x 3 mm for boarding, laid over silver oak joists of size 10cm x 6.5cm spaced at about 75cm centre to centre or at suitable intervals etc. complete in all floors complying with standard specification. (Payment for centering shall be given after the concrete is laid)							
	Below Basement							
	Footing	1	x	19	6.40		0.20	24.320
	For column upto Grade beam level	1	x	4	1.36		0.98	5.304
	For column upto Grade beam level	1	x	13	1.21		0.98	15.337
	For column upto Grade beam level	1	x	2	0.92		0.98	1.794
	For Grade Beam wall alround	1	x	2	41.52		0.38	31.140
	Grade beam cross wall H	1	x	2	12.20		0.38	9.146
	Grade beam cross wall V	2	x	3	6.94		0.38	15.615
	Grade beam Portico	1	x	2	9.35		0.30	5.610
	Toilet Panch Sec	1	x	2	4.55		0.30	2.730
	Toilet Vao	1	x	2	4.75		0.30	2.850
	Staircase-3 Sides	1	x	2	9.83		0.38	7.373
	Stair Toilet	1	x	2	3.49		0.38	2.614
	Total							123.832
	Grade Beam to Basement							
	For column upto Basement	1	x	4	1.36		0.60	3.264
	For column upto Basement	1	x	13	1.21		0.60	9.438
	For column upto Basement	1	x	2	0.92		0.60	1.104
	Ground Floor							
	For Column upto basement to ground floor	1	x	4	1.36		2.57	13.981
	For Column upto basement to ground floor	1	x	13	1.21		2.57	40.426
	For Column upto basement to ground floor	1	x	2	0.92		2.57	4.729
	Lintel							
	Lintel wall alround	1	x	2	41.52		0.23	19.099
	cross wall-Vertical	2	x	2	6.15		0.23	5.656
	cross wall- Horizontal	1	x	2	12.20		0.23	5.610
	Toilet Panch Sec	1	x	2	4.55		0.15	1.365
	Toilet Vao	1	x	2	4.75		0.15	1.425
	Stairs Case Mid Landing beam	1	x	2	2.40		0.38	1.800
	CG	1	x	1	1.50	0.23		0.345
	Grill	1	x	1	1.80	0.23		0.414
	D1	1	x	5	0.75	0.23		0.863
	Door-D	1	x	3	0.90	0.12		0.311

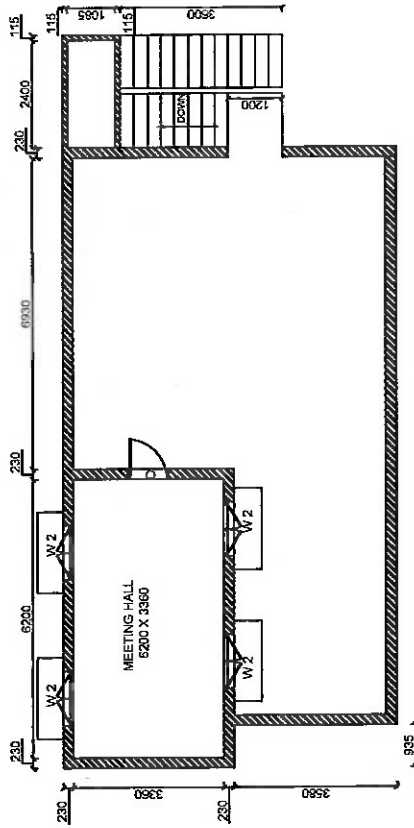
7	Reinforced Cement Concrete M20 - 1:11/5:2 (One Cement, One and a half sand and Three hard broken stone jelly) using 20 mm gauge hard broken granite stone jelly for all RCC items of works excluding cost of reinforcement grill and fabricating charges centering and shuttering but including laying, vibrating with mechanical vibrators, finishing, curing, etc. and providing fixtures like fan clamps in the RCC floor / roof slabs wherever necessary and bearing surfaces of walls, beams etc. shall be finished smooth with Cement Mortar 1:3 (One Cement and Three Sand) etc., complete complying with standard specification and as directed by the departmental officers							
	Below Basement							
	Footing	1	x	19	1.60	1.60	0.20	9.728
	Trapezoidal portion	1	x	19	0.29			5.590
	For column upto Grade beam level	1	x	4	0.23	0.45	0.98	0.404
	For column upto Grade beam level	1	x	13	0.23	0.38	0.98	1.093
	For column upto Grade beam level	1	x	2	0.23	0.23	0.98	0.103
	For Grade Beam wall around	1	x	1	41.52	0.23	0.38	3.581
	Grade beam cross wall H	1	x	1	12.20	0.23	0.38	1.052
	Grade beam cross wall V	1	x	3	6.94	0.23	0.38	1.796
	Portico	1	x	1	9.35	0.23	0.38	0.806
	Toilet Panch Sec	1	x	1	4.55	0.23	0.30	0.314
	Toilet Vao	1	x	1	4.75	0.23	0.30	0.328
	Staircase-3 Sides	1	x	1	1.80	0.23	0.38	0.155
	Stair Toilet	1	x	1	3.49	0.23	0.38	0.301
	Total							25.251
	For column upto Basement	1	x	4	0.23	0.45	0.60	0.552
	For column upto Basement	1	x	13	0.23	0.38	0.60	1.794
	For column upto Basement	1	x	2	0.23	0.23	0.60	0.276
	Ground Floor							
	For Column upto basement to ground floor	1	x	4	0.23	0.45	2.57	1.064
	For Column upto basement to ground floor	1	x	13	0.23	0.38	2.57	2.882
	For Column upto basement to ground floor	1	x	2	0.23	0.23	2.57	0.272
	Lintel							
	Lintel wall around	1	x	1	41.52	0.23	0.23	2.196
	cross wall-Vertical	1	x	2	6.15	0.23	0.23	0.650
	cross wall- Horizontal	1	x	1	12.20	0.23	0.23	0.645
	Toilet Panch Sec	1	x	1	4.55	0.12	0.15	0.078
	Toilet Vao	1	x	1	4.75	0.12	0.15	0.082
	Stairs Case Mid Landing beam	1	x	1	2.40	0.23	0.38	0.207
	Loft VAO and SEC	1	x	2	3.35	0.45	0.05	0.151
	Loft Store	1	x	1	6.20	0.45	0.05	0.140
	Stair case Waist Slab1	1	x	1	3.60	1.20	0.18	0.756
	Stair case Waist Slab2	1	x	1	2.40	1.20	0.18	0.504
	Landing Slab	1	x	1	2.40	1.20	0.15	0.432
	Landing Slab	1	x	1	1.20	1.20	0.125	0.180
	Sunshade							
	Window - W2	1	x	2	1.66	0.60	0.063	0.125
	Door D2	1	x	1	1.56	0.60	0.063	0.059
	Rolling Shutter	1	x	1	2.26	0.60	0.063	0.085
	Roof Beam							
	Room beam -All Round	1	x	1	41.520	0.23	0.250	2.387
	Room beam -Intermediate vertical	1	x	1	6.940	0.23	0.250	0.399
	Room beam -Intermediate vertical	1	x	1	4.895	0.23	0.250	0.281

	Room beam -Intermediate vertical	1	x	2	3.360	0.23	0.250	0.386
	cross wall-Horizontal	1	x	1	3.49	0.23	0.250	0.200
	Portico	1	x	1	9.35	0.23	0.250	0.538
	Stairs Case	1	x	2	2.40	0.23	0.250	0.276
	Roof Slab							
	overall Slab	1	x	1	13.82	7.40	0.125	12.784
	Deduction	-1	x	1	3.58	0.94	0.125	-0.418
	Portico	1	x	1	3.81	3.00	0.125	1.429
	Septic TAnk	1	x	1	2.46	1.96	0.100	0.482
								31.873
	First Floor							
	Above ground floor	1	x	6	0.23	0.38	2.57	1.330
	Above ground floor parapet	1	x	4	0.23	0.45	0.75	0.311
	Above ground floor	1	x	5	0.23	0.38	0.75	0.323
	Sunshade							
	Window - W2	1	x	4	1.66	0.60	0.06	0.249
	Door D2	1	x	1	1.36	0.60	0.06	0.051
	Lintel							
	Lintel wall alround	1	x	2	20.04	0.23	0.15	1.383
	Roof Beam							
	Room beam -All Round	1	x	1	20.040	0.23	0.25	1.152
	Int beam	1	x	1	3.360	0.23	0.25	0.193
	Roof Slab							
	Meeting hall	1	x	1	6.66	3.82	0.125	3.180
	Total							8.172
8	Supplying, fabricating and placing in position Mild Steel / Ribbed Tor Steel grills for all RCC works as per design given including cost of steel and G.I. binding wire in all floors etc. complete complying with standard specification. (Contractor has to make his own arrangements for the supply of steel and binding wire)							
	Footing	1	x	1	15.318	0.05	50kg/m3	0.77
	Column	1	x	1	10.403	0.25	250kg/m3	2.60
	Grade Beam, Lintel beam	1	x	1	13.575	0.15	150 kg/m3	2.04
	Roof slab, Lintel sunshade	1	x	1	20.186	0.08	80 kg/m3	1.61
	Roof Beam	1	x	1	5.814	0.175	175kg/m3	1.02
	Grand Total	1	x	1	8.04		mT	8.040
9	Weathering course in brick jelly lime concrete using broken brick jelly of size 20mm uniform gauge in pure slaked lime (no sand to be used) to the proportion of brick jelly to lime being 32:12.5 by volume and laid over the RCC roof slab in a single layer of required slope and finished by beating the concrete with wooden beaters of approved pattern, keeping the surface constantly wet by sprinkling lime jaggery water, etc., complete as per standard specification and as directed by the departmental officers							
	GF and FF	1	x	1	13.36	6.94	0.075	6.954
	Portico	1	x	1	3.35	2.77	0.075	0.696
	Deduct	-1	x	1	3.35	0.71	0.075	-0.177
	Total							7.473
10	Finishing the top of the roof with one course of Machine Pressed Tiles of size 23 cm x 23x2 cm of approved quality laid in CEMENT MORTAR 1:3(One cement and three sand) 12 mm thick mixed with water proofing compound conforming to ISS by 2% weight of cement used and the joint pointed neatly to full depth of tiles with the same water proofing compound mixed with cement mortar, red oxide, etc., complete complying with standard specification							
	Roof GF and FF	1	x	1	13.36	6.94		92.718

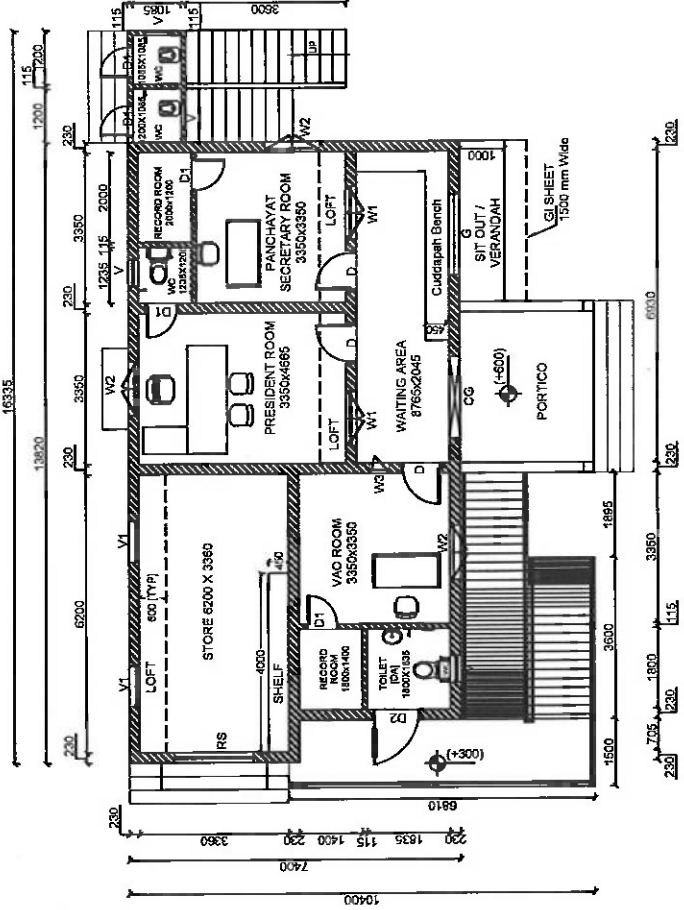
15	Dadoing walls with best approved quality, colour glazed tiles of 150mm x 150mm x 6mm size set in Cement Mortar 1:2 (One Cement and Two sand) 10mm thick and pointing the joints with white cement mixed with colouring pigments at the rate of 0.40 Kg. / sq.m. neatly in all floors, curing, etc., complying with standard specification and as directed by the departmental officers							
	Toilet-Room 1 &2	1	x	2	3.82		1.20	9.168
	President-Toilet	1	x	1	4.12		1.20	4.944
	DA Toilet	1	x	1	6.17		1.20	7.404
	Grant Total							21.516
16	Supplying and fixing in position best approved of BIS quality PVC rain water down fall pipes of 110mm dia., having a pressure of 4 kg. / sq.cm including cost of necessary PVC shoe, PVC bend, cast iron gratings of required diameter and special clamps, brass screws, nails, etc., and fixing of cast iron gratings at junction of parapet and the RCC roof slab including finishing neatly etc., complete. The rate shall be inclusive of cast of removable cast iron grating. The PVC pipe shall be fixed in wall with special type of "U" clamp at the centre of the pipe line in addition to those for more than 3.0 metre pipe length etc. complete complying with standard							
	Total Length	1	x	2	3.50			7.000
	Total Length-FF	1	x	1	6.60			6.600
17	Supplying and fixing of M.S.grill of approved design for grill gate, grill work to doors and windows openings etc., using necessary mild steel etc., complete complying with standard specification							
	Grill	1	x	1	1.20	-	1.30	1.560
	Total							1.560
	25 kg /Sq.m						25.00	39.000
18	Plastering with Cement Mortar 1:5 (One cement and Five sand), 12mm thick in all floors including curing etc. complete complying with standard specification and as directed by the departmental officers.							
	Brickwork qty /0.23 x 2	1	x	2	78.67	4.3478	(1/0.23)	684.060
	TOTAL							684.060
19	Special ceiling plastering and finishing the exposed surface of all RCC items of work such as slabs, beams, sunshades, facia, canopy slab, staircase waist slab, landing slab etc., with Cement Mortar 1:3 (One Cement and Three Sand) 10mm thick including hacking the surfaces, providing cement mortar nosing, beading for sunshades, staircases, steps, landing slabs and curing, etc., in all floors complying with standard specification and as directed by the departmental officers							
	Ceiling							
	Bottom Store	1	x	1	6.20	3.36		20.832
	President Room	1	x	1	4.67	3.36		15.674
	Panchayat Secretary room	1	x	1	4.67	3.36		15.674
	Waiting Area	1	x	1	8.77	2.05		17.924
	Vao Room	1	x	1	3.35	5.27		17.638
	Portico	1	x	1	3.35	2.77		9.280
	FF- Meeting Hall	1	x	1	6.20	3.36		20.832
								117.854
20	Painting two coats of newly plastered wall surface with ready mixed plastic emulsion paint of first class quality and of approved colour over a priming coat including thorough scrapping, clean removal of dirt, and including necessary plaster of Paris putty, wherever required etc., complete complying with standard specification.							
	Wall Plastrering Qty	1	x	1	684.06			
	Ceiling Plastering Qty	1	x	1	117.85			

op-2

VILLAGE SECRETARIAT



FIRST FLOOR PLAN



GROUND FLOOR PLAN

IMPORTANT NOTES:-

- ECONOMICAL FOUNDATION MAY BE ADOPTED. DEPTH OF FOUNDATION SHOULD BE BASED ON THE SBC OF SOIL AVAILABLE AT SITE.
- FLOOR FINISH WITH VITRIFIED TILES.
- SILL SLAB (75mm THICK) SHOULD BE PROVIDED AT THE BOTTOM OF ALL WINDOW OPENINGS WITH 250mm EXTENSION EITHER SIDE.
- PLINTH PROTECTION PLATFORM OF 750mm SHOULD BE PROVIDED ALL AROUND THE BUILDING.
- SLIGHT SLOPE SHOULD BE GIVEN FOR ROOF SLAB.
- WEATHERING COURSE SHOULD BE PROVIDED WITH REQUIRED SLOPE TO DRAIN RAIN WATER.
- SEPT. STRUCTURE SHOULD BE CONSTRUCTED AWAY FROM WATER SOURCE (ANY) AND IT CAN BE LINKED TO A NEARBY DRAINAGE.
- 10MM OF PVC PIPES MAY BE USED FOR RAIN WATER DOWNSPALL PIPES.
- CONTINUOUS LINTEL SHOULD BE PROVIDED.
- TOILET FLOORING SHOULD BE DONE USING ANTI SKID TILES FOR TOILETS ONLY.
- HANDRAILS SHOULD BE PROVIDED INSIDE THE TOILET AND AT THE RAMP PORTION FOR DIFFERENTLY ABLED PERSONS.
- SURFACE OF THE RAMP SHOULD BE GROOVED.
- DOOR (FOR DA TOILET) SHOULD BE PROVIDED WITH HANDRAIL.
- HARMONIZED GUIDELINES AND SPACE STANDARDS FOR PERSON WITH DISABILITIES (FEB-2016) SHOULD BE REFERRED FOR POSITIONING OF SANITARY FIXTURES TO DISABLED TOILET.
- THE SIZE OF FOOTINGS , COLUMN , BEAMS AND SLAB SHOULD BE DECIDED UPON THE STRUCTURAL DESIGN OF THE BUILDING.
- ALL DIMENSIONS ARE IN mm.

SCHEDULE OF JOINERY

SL NO	TYPE	SIZE	WIDTH	HEIGHT	SILL	TOP	DESCRIPTION	REMARKS
1	D	800	2100	-	2100	-	STEEL DOOR WITH 18GMS SHEET SHUTTER	SINGLE LEAF
2	D1	750	2100	-	2100	-	STEEL DOOR WITH 18GMS SHEET SHUTTER	SINGLE LEAF
3	D2	1100	1800	-	1800	-	STEEL DOOR WITH 18GMS SHEET SHUTTER WITH HANDRAIL	SINGLE LEAF
4	W1	900	1900	800	2100	800	STEEL WINDOWS WITH 18GMS SHEET SHUTTER AND 12mm Sq.m BARS	TWO LEAVES
5	W2	1200	1900	800	2100	800	STEEL WINDOWS WITH 18GMS SHEET SHUTTER AND 12mm Sq.m BARS	TWO LEAVES
6	W3	450	1900	800	2100	800	STEEL WINDOWS WITH 18GMS SHEET SHUTTER AND 12mm Sq.m BARS	SINGLE LEAF
7	V1	900	600	1500	2100	-	VENTILATOR	-
8	V	600	450	1850	2100	-	VENTILATOR	-
9	RS	1800	2100	-	-	-	ROLLING SHUTTER	-
10	CG	1500	2100	-	-	-	COLLAPSIBLE GATE	-
11	G	1800	1300	1800	2100	-	GRILL	-

PLINTH AREA : 98.92 sq.m / 1064.77sq.ft
 FIRST FLOOR : 25.44 sq.m / 273.89sq.ft TOTAL AREA : 1472sq.ft
 STAIRCASE : 12.36sq.m / 133.00 sq.ft [Excluding - Portico]

DIRECTORATE OF RURAL DEVELOPMENT AND PANCHAYAT RAJ

TITLE : VILLAGE SECRETARIAT OPTION-2

AE	DATE
EE	SE
CE	SH. No. 1 OF 1
DRAWING NO.	REVISION : 0

